

<b>JUNG TRANSPORT TROLLEYS .....</b>	<b>2</b>
<b>TR TRANSPORT TROLLEYS .....</b>	<b>25</b>
<b>BORKEY TRANSPORT TROLLEYS .....</b>	<b>27</b>

## JUNG TRANSPORT TROLLEYS

**Transport trolleys for load weight up to 200 metric tons with optimal capacity to weight ratio thanks to innovative construction.**

All trolleys are equipped with high quality wheels with precision ball bearings and extremely durable coating:

- JUWAmid wheels: white (on demand) or black (standard) polyamide wheels with a steel core.
- JUWAtan wheels: non-marking yellow/brown wheels in polyurethane with aluminium core for reduced weight, leave no marks and protect the floor.
- JUWAtan double wheels (Professional series): result in dramatically easier steering due to reduced friction forces in curves. The much lower friction resistance also causes the castors on the rear axis to follow in a true to track course.

The steerable trolleys are equipped with:

- ball bearing supported turntable.
- pulling bar with handle, over 6 metric tons with towing eye.

The load capacity specification refers to a maximum speed of 2 km/h.

The JUNG transport trolleys can be subdivided into different groups:

### JKB SERIES K & SERIES G

**For loads up to 28 metric tons, height 110 mm (series K) or 180 mm (series G).**

- High load capacity at low weight.
- Bearing supported swivelling castors allow 360° manoeuvrability.
- The transports trolleys of the series K and G with the same height are interchangeable.
- All the trolleys have a platform centre hole to allow attachment to the load.
- For choosing the adequate revolving trolley we recommend a load of two-third of the maximum capacity. This will be the most advantageous compromise between payload, ergonomics and handling of the devices.
- Pulling handle and connecting bars available as accessories.
- Available in a set of two.
- Optional connecting bars can be fixed without tools by clamping down on adapter.



### JL(B) & JFB SERIES K & K PROFESSIONAL

**For loads up to 24 metric tons (series K) or 28 metric tons (series K Professional), height 110 mm.**

- Galvanized axles and safety clip rings for improved protection against corrosion.
- All transport trolleys are ready for use upon delivery.



### JLB & JFB SERIES S

**For loads up to 48 metric tons, height 125 mm.**

- Slim wheel design results in easier steering due to reduced friction forces also in curves.
- Very low height at only 125 mm, with high capacity and less own weight.
- All transport trolleys are ready for use upon delivery.



### JLF SERIES M

**For loads up to 15 metric tons, height 150 mm.**

- Swivelling leading castors make steering easier by up to 80 %.
- Ergonomic: reduces handling effort for user.
- Better directional stability on long straight-line paths with trailing rigid castors.
- Trolleys can be used as steerable, adjustable or tandem trolley.
- Ideal for transporting loads on slalom paths including 90° true-to-course straight line, turning and sideways manoeuvring.
- Low profile. Low weight.
- Additional pulling handle in the set for steering of rear-trailing trolleys for tighter turning radius.



## JLB & JFB SERIES G PROFESSIONAL

**For loads up to 60 metric tons, height 180 mm.**

- From JLB 20 up, pivoting cassettes and axles within the frame assure even pressure distribution across all castors and across the floor. No need for complex and expensive hydraulic compensation system.
- All transport trolleys are ready for use upon delivery.



## JL(B) & JFB SERIES H PROFESSIONAL

**For loads up to 200 metric tons, height 230 mm / 240 mm.**

- Unrivalled: small and lightweight trolleys at super high capacity.
- Steerable transport trolleys with pivoting cassettes for a better load distribution at all castors and the floor.
- All transport trolleys are ready for use upon delivery.



## JLA-e

**For loads up to 50 metric tons, height 180 mm / 230 mm (JLA-e) or 30 metric tons, height 180 mm / 200 mm (JLA-e with stroke).**

- Spare a towing vehicle
- High running time (at full load under ideal conditions) by direct-driven motor.
- Low charging time (approx. 1,5h). Alternatively available with quick charger (charging time approx. 1h).
- 360° manoeuvrable.
- Infinitely variable speed.
- Very compact dimensions.
- Batteries are interchangeable.
- Compatible with series G and series H. Transport trolleys are not included.
- Included: high performance accumulator with pulse charging device, remote control with battery, charger and belt holder.



## JTL(B) & JFB "WELD-ON CONE"

**For transporting containers up to 28 metric tons, height 170 mm.**

- "Weld-on Cone" version for indoor container transport on smooth floors includes turntables fitted with cones, 2-parts container-wide connecting bars with fixed length of 2.26 m and a pulling handle with towing eye.
- Weld-on-Cone: form-fitting-hold between the trolley and the container.
- Safe transport of containers.
- Low height for moving containers low to the ground.
- Compatible with all ISO-containers.



## JTL(B) & JFB "TWISTLOCK"

**For transporting containers up to 60 metric tons, height 300 mm.**

- "Twistlock" version for outdoor transport for use on pavement includes turntables fitted with "Twistlock" to secure containers to transport trolleys, 2-parts connecting bars with fixed length 2.26 m for ISO-containers and a pulling handle with towing eye.
- Twistlock: lock-to-hold mechanism between the trolley and the container.
- Safe transport of containers.
- Low height for moving containers low to the ground.
- Compatible with all ISO-containers.



## JHT-S

**For loads up to 3,8 metric tons.**

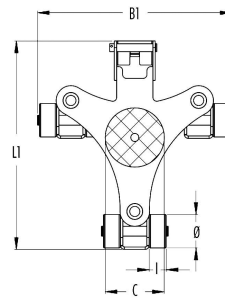
- Hydro-transporters are ideal for moving cabinets, safes, boxes or machines. They are easy and safe in use. One transporter consists of 2 transport units and 2 belts to connect. The transport units are attached on the sides of the load and connected with the standard belt.
- While pumping up the movable part of the transporter on both sides the load is lifted and ready for moving.
- Steering can be done by the top link bars on each unit, connected with the big wheels equipped with ball bearings. The linkage guarantees that the wheels are always in parallel direction.
- Both transport units are easy to be transported together.



## JKB 2 K

Revolving transport trolley JUNG JKB for loads up to 2 metric tons

- A** Transport trolley for moving heavy loads.
- +** Excellent quality, for heavy jobs, easy to handle.  
Version JUWAmid: black wheels.  
Version JUWathan: yellow/brown wheels, increase friction slightly, but they are better and are non-marking.  
Option: white JUWAmid wheels.
- i** The set includes 2 transport trolleys, without accessories.



**JKB 2 K JUWAmid**



**JKB 2 Set JUWAmid**



**JKB 2 K JUWathan**

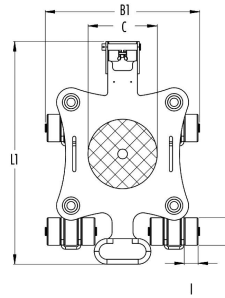
Type	Code	WLL (kg)	# wheels	Ø wheels x l (mm)	Height (mm)	C (mm)	L1 x B1 (mm)	Weight (kg)
JKB 2 K JUWAmid	14 020 085-P	2.000	6	85 x 43	110	150	528 x 495	20
JKB 2 Set JUWAmid	14 020 085-D	2 x 2.000	2 x 6	85 x 43	110	150	528 x 495	2 x 20
JKB 2 K JUWathan	14 020 085-VU	2.000	6	85 x 43	110	150	528 x 495	20
JKB 2 Set JUWathan	14 020 085-DVU	2 x 2.000	2 x 6	85 x 43	110	150	528 x 495	2 x 20

Bestseller

## JKB 4 K

Revolving transport trolley JUNG JKB for loads up to 4 metric tons

- A** Transport trolley for moving heavy loads.
- +** Excellent quality, for heavy jobs, easy to handle.  
Version JUWAmid: black wheels.  
Version JUWathan: yellow/brown wheels, increase friction slightly, but they are better and are non-marking.  
Option: white JUWAmid wheels.
- i** The set includes 2 transport trolleys, without accessories.



**JKB 4 K JUWAmid**



**JKB 4 Set JUWAmid**



**JKB 4 K JUWathan**

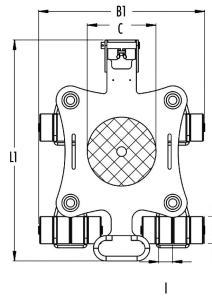
Type	Code	WLL (kg)	# wheels	Ø wheels x l (mm)	Height (mm)	C (mm)	L1 x B1 (mm)	Weight (kg)
JKB 4 K JUWAmid	14 041 085-P	4.000	12	85 x 43	110	250	690 x 475	38
JKB 4 Set JUWAmid	14 041 085-D	2 x 4.000	2 x 12	85 x 43	110	250	690 x 475	2 x 38
JKB 4 K JUWathan	14 041 085-VU	4.000	12	85 x 43	110	250	690 x 475	38
JKB 4 Set JUWathan	14 041 085-DVU	2 x 4.000	2 x 12	85 x 43	110	250	690 x 475	2 x 38

Bestseller

## JKB 6 K

Revolving transport trolley JUNG JKB for loads up to 6 metric tons

- A** Transport trolley for moving heavy loads.
- +** Excellent quality, for heavy jobs, easy to handle.  
Version JUWAmid: black wheels.  
Version JUWathan: yellow/brown wheels, increase friction slightly, but they are better and are non-marking.  
Option: white JUWAmid wheels.
- i** The set includes 2 transport trolleys, without accessories.



**JKB 6 K JUWAmid**



**JKB 6 Set JUWAmid**



**JKB 6 K JUWathan**

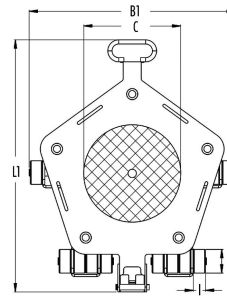
Type	Code	WLL (kg)	# wheels	Ø wheels x l (mm)	Height (mm)	C (mm)	L1 x B1 (mm)	Weight (kg)
JKB 6 K JUWAmid	14 061 085-P	6.000	16	85 x 43	110	250	675 x 525	41
JKB 6 Set JUWAmid	14 061 085-D	2 x 6.000	2 x 16	85 x 43	110	250	675 x 525	2 x 41
✪ JKB 6 K JUWathan	14 061 085-VU	6.000	16	85 x 43	110	250	675 x 525	41
✪ JKB 6 Set JUWathan	14 061 085-DVU	2 x 6.000	2 x 16	85 x 43	110	250	675 x 525	2 x 41

✪ Bestseller

## JKB 8 K

Revolving transport trolley JUNG JKB for loads up to 8 metric tons

- A** Transport trolley for moving heavy loads.
- +** Excellent quality, for heavy jobs, easy to handle.  
Version JUWAmid: black wheels.  
Version JUWathan: yellow/brown wheels, increase friction slightly, but they are better and are non-marking.  
Option: white JUWAmid wheels.
- i** The set includes 2 transport trolleys, without accessories.



**JKB 8 K JUWAmid**



**JKB 8 Set JUWAmid**



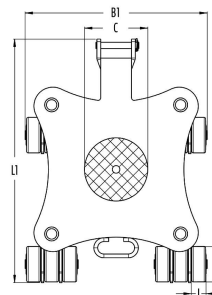
**JKB 8 K JUWathan**

Type	Code	WLL (kg)	# wheels	Ø wheels x l (mm)	Height (mm)	C (mm)	L1 x B1 (mm)	Weight (kg)
JKB 8 K JUWAmid	14 080 085-P	8.000	20	85 x 43	110	250	895 x 740	64
JKB 8 Set JUWAmid	14 080 085-D	2 x 8.000	2 x 20	85 x 43	110	250	895 x 740	2 x 64
JKB 8 K JUWathan	14 080 085-VU	8.000	20	85 x 43	110	250	895 x 740	64
JKB 8 Set JUWathan	14 080 085-DVU	2 x 8.000	2 x 20	85 x 43	110	250	895 x 740	2 x 64

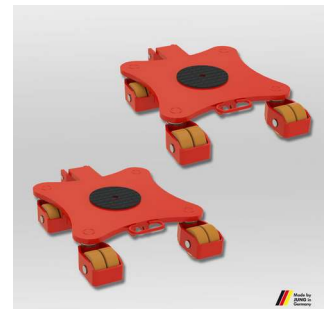
## JKB 10 G

Revolving transport trolley JUNG JKB for loads up to 10 metric tons

- A** Transport trolley for moving heavy loads.
- +** Excellent quality, for heavy jobs, easy to handle.
- i** The set includes 2 transport trolleys, without accessories.



**JKB 10 G JUWathan**



**JKB 10 Set JUWathan**

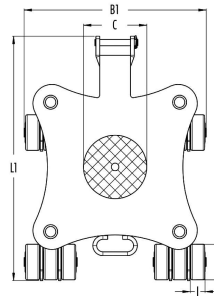
Type	Code	WLL (kg)	# wheels	Ø wheels x l (mm)	Height (mm)	C (mm)	L1 x B1 (mm)	Weight (kg)
JKB 10 G	14 01 140-VU	10.000	8	140 x 59	180	250	975 x 665	127
JKB 10 Set	14 101 140-DVU	2 x 10.000	2 x 8	140 x 59	180	250	975 x 665	2 x 127

Bestseller

## JKB 14 G

Revolving transport trolley JUNG JKB for loads up to 14 metric tons

- A** Transport trolley for moving heavy loads.
- +** Excellent quality, for heavy jobs, easy to handle.
- i** The set includes 2 transport trolleys, without accessories.



**JKB 14 G JUWathan**



**JKB 14 Set JUWathan**

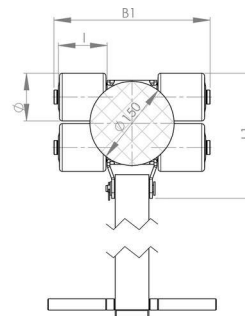
Type	Code	WLL (kg)	# wheels	Ø wheels x l (mm)	Height (mm)	C (mm)	L1 x B1 (mm)	Weight (kg)
JKB 14 G	14 140 140-VU	14.000	12	140 x 59	180	250	975 x 720	148
JKB 14 Set	14 140 140-DVU	2 x 14.000	2 x 12	140 x 59	180	250	975 x 720	2 x 148

Bestseller

## JLB 3 K

Directional transport trolley JUNG JLB series K for loads up to 3 metric tons

- A** Transport trolley for moving heavy loads.
- +** Excellent quality, for heavy jobs, easy to handle.



**JLB 3 K**

Type	Code	WLL (kg)	# wheels	Ø wheels x l (mm)	Height (mm)	C (mm)	L1 x B1 (mm)	Bar length (mm)	Weight (kg)
JLB 3 K	07 031 085-V	3.000	4	85 x 85	110	150	225 x 280	990	12

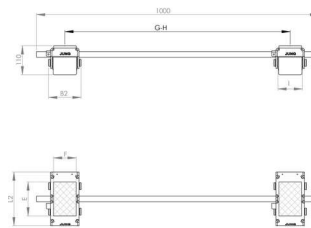
Bestseller



### JFB 3 K

Fixed transport trolley JUNG JFB series K for loads up to 3 metric tons

- A** Transport trolley for moving heavy loads.
- +** Excellent quality, for heavy jobs, easy to handle.



**JFB 3 K**

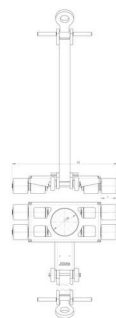
Type	Code	WLL (kg)	# wheels	Ø wheels x l (mm)	Height (mm)	E x F (mm)	L2 x B2 (mm)	G - H (mm)	Bar length (mm)	Weight (kg)
JFB 3 K	08 031 085-V	2 x 1.500	2 x 2	85 x 85	110	120 x 80	190 x 115	125 - 880	1.000	11

Bestseller

### JLB 6 K

Directional transport trolley JUNG JLB series K for loads up to 6 metric tons

- A** Transport trolley for moving heavy loads.
- +** Excellent quality, for heavy jobs, easy to handle.



**JLB 6 K**

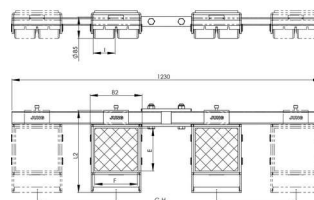
Type	Code	WLL (kg)	# wheels	Ø wheels x l (mm)	Height (mm)	C (mm)	L1 x B1 (mm)	Bar length (mm)	Weight (kg)
JLB 6 K	07 061 085-V	6.000	8	85 x 85	110	150	445 x 590	1.210	34

Bestseller

### JFB 6 K

Fixed transport trolley JUNG JFB series K for loads up to 6 metric tons

- A** Transport trolley for moving heavy loads.
- +** Excellent quality, for heavy jobs, easy to handle.



**JFB 6 K**

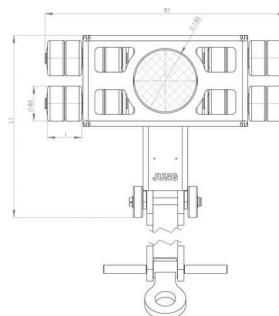
Type	Code	WLL (kg)	# wheels	Ø wheels x l (mm)	Height (mm)	E x F (mm)	L2 x B2 (mm)	G - H (mm)	Bar length (mm)	Weight (kg)
JFB 6 K	08 061 085-V	2 x 3.000	2 x 4	85 x 85	110	170 x 170	325 x 200	400 - 1.030	1.230	25

Bestseller

## JLB 7 K

Directional transport trolley JUNG JLB series K professional for loads up to 7 metric tons

- A** Transport trolley for moving heavy loads.
- +** Excellent quality, for heavy jobs, easy to handle.  
Twin castors.



**JLB 7 K**

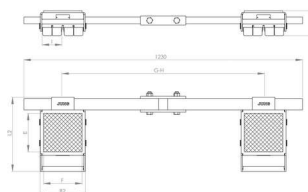
	Type	Code	WLL (kg)	# wheels	Ø wheels x l (mm)	Height (mm)	C (mm)	L1 x B1 (mm)	Bar length (mm)	Weight (kg)
☛	JLB 7 K	07 071 085-D	7.000	8	85 x 85	110	150	445 x 590	1.210	35

☛ Bestseller

## JFB 7 K

Fixed transport trolley JUNG JFB series K professional for loads up to 7 metric tons

- A** Transport trolley for moving heavy loads.
- +** Excellent quality, for heavy jobs, easy to handle.  
Twin castors.



**JFB 7 K**

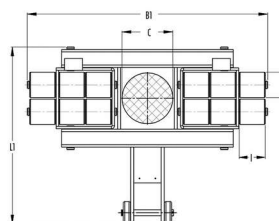
	Type	Code	WLL (kg)	# wheels	Ø wheels x l (mm)	Height (mm)	E x F (mm)	L2 x B2 (mm)	G - H (mm)	Bar length (mm)	Weight (kg)
☛	JFB 7 K	08 071 085-D	2 x 3.500	2 x 4	85 x 85	110	170 x 170	325 x 200	400 - 1.030	1.230	27

☛ Bestseller

## JL 9 K

Directional transport trolley JUNG JLB series K for loads up to 9 metric tons

- A** Transport trolley for moving heavy loads.
- +** Excellent quality, for heavy jobs, easy to handle.



**JL 9 K**

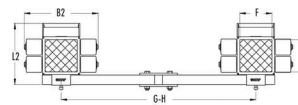
	Type	Code	WLL (kg)	# wheels	Ø wheels x l (mm)	Height (mm)	C (mm)	L1 x B1 (mm)	Bar length (mm)	Weight (kg)
	JL 9 K	07 090 085-V	9.000	12	85 x 85	110	170	580 x 820	1.210	49

☛ Bestseller

## JFB 9 K

Fixed transport trolley JUNG JFB series K for loads up to 9 metric tons

- A** Transport trolley for moving heavy loads.
- +** Excellent quality, for heavy jobs, easy to handle.



### JFB 9 K

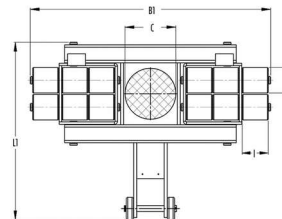
Type	Code	WLL (kg)	# wheels	Ø wheels x l (mm)	Height (mm)	E x F (mm)	L2 x B2 (mm)	G - H (mm)	Bar length (mm)	Weight (kg)
JFB 9 K	08 091 085-V	2 x 4.500	2 x 6	85 x 85	110	170 x 170	325 x 390	400 - 1.030	1.230	31

Bestseller

## JL 10 K

Directional transport trolley JUNG JL series K professional for loads up to 10 metric tons

- A** Transport trolley for moving heavy loads.
- +** Excellent quality, for heavy jobs, easy to handle.  
Twin castors.



### JL 10 K

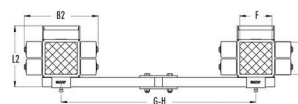
Type	Code	WLL (kg)	# wheels	Ø wheels x l (mm)	Height (mm)	C (mm)	L1 x B1 (mm)	Bar length (mm)	Weight (kg)
JL 10 K	07 100 085-D	10.000	12	85 x 85	110	170	580 x 820	1.210	56

Bestseller

## JFB 10 K

Fixed transport trolley JUNG JFB series K professional for loads up to 10 metric tons

- A** Transport trolley for moving heavy loads.
- +** Excellent quality, for heavy jobs, easy to handle.  
Twin castors.



### JFB 10 K

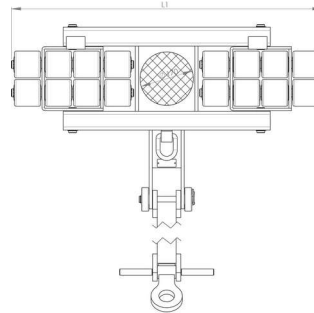
Type	Code	WLL (kg)	# wheels	Ø wheels x l (mm)	Height (mm)	E x F (mm)	L2 x B2 (mm)	G - H (mm)	Bar length (mm)	Weight (kg)
JFB 10 K	08 101 085-D	2 x 5.000	2 x 6	85 x 85	110	170 x 170	325 x 390	400 - 1.030	1.230	35

Bestseller

## JL 12 K

Directional transport trolley JUNG JLB series K for loads up to 12 metric tons

- A** Transport trolley for moving heavy loads.
- +** Excellent quality, for heavy jobs, easy to handle.



**JL 12 K**

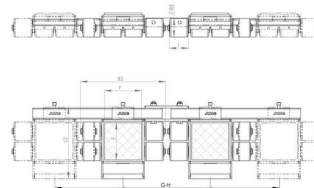
Type	Code	WLL (kg)	# wheels	Ø wheels x l (mm)	Height (mm)	C (mm)	L1 x B1 (mm)	Bar length (mm)	Weight (kg)
JL 12 K	07 120 085-V	12.000	16	85 x 85	110	170	580 x 1.000	1.210	62

Bestseller

## JFB 12 K

Fixed transport trolley JUNG JFB series K for loads up to 12 metric tons

- A** Transport trolley for moving heavy loads.
- +** Excellent quality, for heavy jobs, easy to handle.



**JFB 12 K**

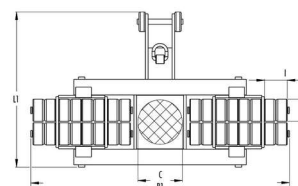
Type	Code	WLL (kg)	# wheels	Ø wheels x l (mm)	Height (mm)	E x F (mm)	L2 x B2 (mm)	G - H (mm)	Bar length (mm)	Weight (kg)
JFB 12 K	08 121 085-V	2 x 6.000	2 x 8	85 x 85	110	170 x 170	325 x 390	400 - 1.030	1.230	34

Bestseller

## JL 14 K

Directional transport trolley JUNG JL series K professional for loads up to 14 metric tons

- A** Transport trolley for moving heavy loads.
- +** Excellent quality, for heavy jobs, easy to handle.  
Twin castors.



**JL 14 K**

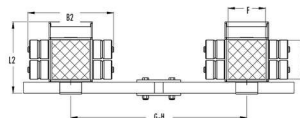
Type	Code	WLL (kg)	# wheels	Ø wheels x l (mm)	Height (mm)	C (mm)	L1 x B1 (mm)	Bar length (mm)	Weight (kg)
JL 14 K	07 140 085-D	14.000	16	85 x 85	110	170	580 x 1.000	1.210	65

Bestseller


## JFB 14 K

Fixed transport trolley JUNG JFB series K professional for loads up to 14 metric tons

- A** Transport trolley for moving heavy loads.
- +** Excellent quality, for heavy jobs, easy to handle. Twin castors.



### JFB 14 K

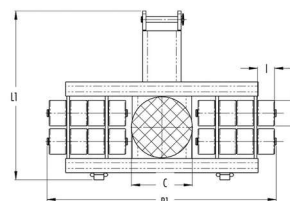
Type	Code	WLL (kg)	# wheels	Ø wheels x l (mm)	Height (mm)	E x F (mm)	L2 x B2 (mm)	G - H (mm)	Bar length (mm)	Weight (kg)
 JFB 14 K	08 141 085-D	2 x 7.000	2 x 8	85 x 85	110	170 x 170	325 x 390	400 - 1.030	1.230	38

 Bestseller

## JLB Series S

Directional transport trolley JUNG JLB series S for loads up to 24 metric tons

- A** Transport trolley for moving heavy loads.
- +** Excellent quality, for heavy jobs, easy to handle.



### JLB 16 S

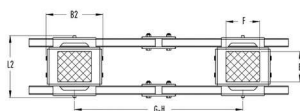
Type	Code	WLL (kg)	# wheels	Ø wheels x l (mm)	Height (mm)	C (mm)	L1 x B1 (mm)	Bar length (mm)	Weight (kg)
JLB 16 S	05 161 090-V	16.000	16	90 x 60	125	215	580 x 815	1.230	82
JLB 24 S	05 242 090-V	24.000	24	90 x 60	125	215	580 x 1.165	1.480	124

 Bestseller

## JFB Series S

Fixed transport trolley JUNG JFB series S for loads up to 24 metric tons

- A** Transport trolley for moving heavy loads.
- +** Excellent quality, for heavy jobs, easy to handle.



### JFB 16 S

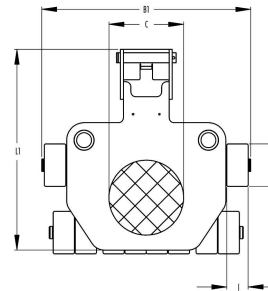
Type	Code	WLL (kg)	# wheels	Ø wheels x l (mm)	Height (mm)	E x F (mm)	L2 x B2 (mm)	G - H (mm)	Bar length (mm)	Weight (kg)
JFB 16 S	06 161 090-V	2 x 8.000	2 x 8	90 x 60	125	200 x 220	370 x 330	540 - 1.300	2 x 1.540	74
JFB 24 S	06 242 090-V	2 x 12.000	2 x 12	90 x 60	125	200 x 220	370 x 465	660 - 1.300	2 x 1.540	78

 Bestseller

### JLF 3,5

Multi-purpose trolleys JUNG JLF series M for loads up to 3,5 metric tons

- A** Transport trolley for moving heavy loads.
- +** Excellent quality, for heavy jobs, easy to handle.



**JLF 3,5**

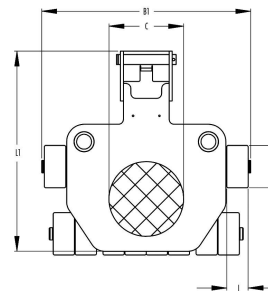
Type	Code	WLL (kg)	# wheels	Ø wheels x l (mm)	Height (mm)	C (mm)	L1 x B1 (mm)	Weight (kg)
JLF 3,5	16 035 085-D	3.500	4 / 2 (twin)	85 x 43	150	150	410 x 420	25

Bestseller

### JLF 5

Multi-purpose trolleys JUNG JLF series M for loads up to 5 metric tons

- A** Transport trolley for moving heavy loads.
- +** Excellent quality, for heavy jobs, easy to handle.



**JLF 5**

Type	Code	WLL (kg)	# wheels	Ø wheels x l (mm)	Height (mm)	C (mm)	L1 x B1 (mm)	Weight (kg)
JLF 5	16 050 085-D	5.000	4 / 4 (twin)	85 x 43	150	150	410 x 420	28

Bestseller

### JLF Set 12

Set of multi-purpose trolleys JUNG JLF series M for loads up to 12 metric tons

- A** Set of transport trolleys for moving heavy loads.
- +** Excellent quality, for heavy jobs, easy to handle.



**JLF Set 12**

Type	Code	WLL (kg)	Weight (kg)
JLF Set 12	16 120 085-D	1 x 5.000 + 2 x 3.500	89

Bestseller

## JLF Set 15

Set of multi-purpose trolleys JUNG JLF series M for loads up to 15 metric tons

- A** Set of transport trolleys for moving heavy loads.
- +** Excellent quality, for heavy jobs, easy to handle.



**JLF Set 15**

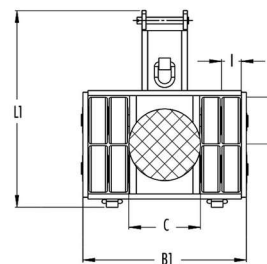
Type	Code	WLL (kg)	Weight (kg)
JLF Set 15	16 150 085-D	3 x 5.000	95

Bestseller

## JLB 15 G

Directional transport trolley JUNG JLB series G professional for loads up to 15 metric tons

- A** Transport trolley for moving heavy loads.
- +** Excellent quality, for heavy jobs, easy to handle. Twin castors.



**JLB 15 G**

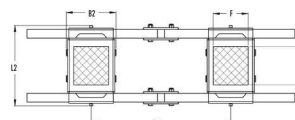
Type	Code	WLL (kg)	# wheels	Ø wheels x l (mm)	Height (mm)	C (mm)	L1 x B1 (mm)	Bar length (mm)	Weight (kg)
JLB 15 G	09 152 140-V	15.000	12	140 x 59	180	215	565 x 610	1.230	92

Bestseller

## JFB 15 G

Fixed transport trolley JUNG JFB series G professional for loads up to 15 metric tons

- A** Transport trolley for moving heavy loads.
- +** Excellent quality, for heavy jobs, easy to handle. Twin castors.



**JFB 15 G**

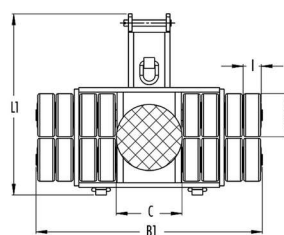
Type	Code	WLL (kg)	# wheels	Ø wheels x l (mm)	Height (mm)	E x F (mm)	L2 x B2 (mm)	G - H (mm)	Bar length (mm)	Weight (kg)
JFB 15 G	10 152 140-V	2 x 7.500	2 x 6	140 x 59	180	220 x 120	460 x 205	415 - 1.300	2 x 1.540	63

Bestseller

## JLB 20 G

Directional transport trolley JUNG JLB series G professional for loads up to 20 metric tons

- A** Transport trolley for moving heavy loads.
- +** Excellent quality, for heavy jobs, easy to handle.  
Twin castors.



**JLB 20 G**

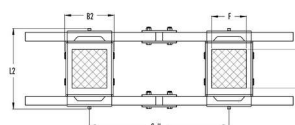
Type	Code	WLL (kg)	# wheels	Ø wheels x l (mm)	Height (mm)	C (mm)	L1 x B1 (mm)	Bar length (mm)	Weight (kg)
☛ JLB 20 G	09 202 140-V	20.000	16	140 x 59	180	215	565 x 741	1.230	96

☛ Bestseller

## JFB 20 G

Fixed transport trolley JUNG JFB series G professional for loads up to 20 metric tons

- A** Transport trolley for moving heavy loads.
- +** Excellent quality, for heavy jobs, easy to handle.  
Twin castors.



**JFB 20 G**

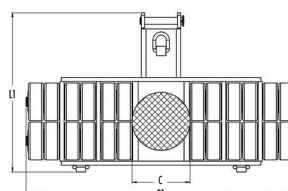
Type	Code	WLL (kg)	# wheels	Ø wheels x l (mm)	Height (mm)	E x F (mm)	L2 x B2 (mm)	G - H (mm)	Bar length (mm)	Weight (kg)
☛ JFB 20 G	10 202 140-V	2 x 10.000	2 x 8	140 x 59	180	220 x 200	460 x 285	475 - 1.300	2 x 1.540	80

☛ Bestseller

## JLB 30 G

Directional transport trolley JUNG JLB series G professional for loads up to 30 metric tons

- A** Transport trolley for moving heavy loads.
- +** Excellent quality, for heavy jobs, easy to handle.  
Twin castors.



**JLB 30 G**

Type	Code	WLL (kg)	# wheels	Ø wheels x l (mm)	Height (mm)	C (mm)	L1 x B1 (mm)	Bar length (mm)	Weight (kg)
☛ JLB 30 G	09 302 140-V	30.000	24	140 x 59	180	215	565 x 995	1.480	140

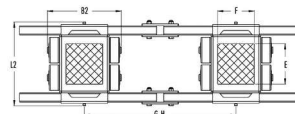
☛ Bestseller



## JFB 30 G

Fixed transport trolley JUNG JFB series G professional for loads up to 30 metric tons

- A** Transport trolley for moving heavy loads.
- +** Excellent quality, for heavy jobs, easy to handle.  
Twin castors.



### JFB 30 G

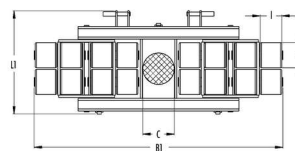
Type	Code	WLL (kg)	# wheels	Ø wheels x l (mm)	Height (mm)	E x F (mm)	L2 x B2 (mm)	G - H (mm)	Bar length (mm)	Weight (kg)
JFB 30 G	10 302 140-V2	2 x 15.000	2 x 12	140 x 59	180	220 x 200	460 x 400	530 - 1.300	2 x 1.540	98

Bestseller

## JLB Series H

Directional transport trolley JUNG JL(B) series H professional for loads up to 80 metric tons

- A** Transport trolley for moving heavy loads.
- +** Excellent quality, for heavy jobs, easy to handle.  
Twin castors.



### JLB 40 H

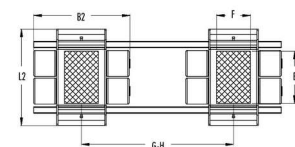
Type	Code	WLL (kg)	# wheels	Ø wheels x l (mm)	Height (mm)	C (mm)	L1 x B1 (mm)	Bar length (mm)	Weight (kg)
JLB 40 H	09 400 206-H	40.000	16	200 x 85	230	250	650 x 1.060	1.600	314
JLB 60 H	09 600 206-H	60.000	24	200 x 85	230	250	650 x 1.400	1.600	425
JL 80 H	09 800 206-H	80.000	32	200 x 85	240	250	820 x 1.970	1.600	697

Bestseller

## JFB Series H

Fixed transport trolley JUNG JFB series H professional for loads up to 120 metric tons

- A** Transport trolley for moving heavy loads.
- +** Excellent quality, for heavy jobs, easy to handle.  
Twin castors.



### JFB 80 H

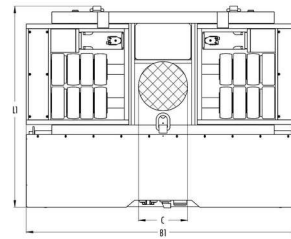
Type	Code	WLL (kg)	# wheels	Ø wheels x l (mm)	Height (mm)	E x F (mm)	L2 x B2 (mm)	G - H (mm)	Bar length (mm)	Weight (kg)
JFB 40 H	10 400 206-H	2 x 20.000	2 x 8	200 x 85	230	400 x 260	740 x 395	585 - 1.500	2 x 1.540	310
JFB 60 H	10 600 206-H	2 x 30.000	2 x 12	200 x 85	230	400 x 260	740 x 580	700 - 1.500	2 x 1.540	412
JFB 80 H	10 800 206-H	2 x 40.000	2 x 16	200 x 85	240	400 x 260	750 x 830	830 - 2.800	2 x 3.000	438
JFB 120 H	10 912 206-H	2 x 60.000	2 x 24	200 x 85	240	440 x 300	960 x 830	830 - 2.800	2 x 3.000	766

Bestseller

## JLA-e 5/12 G

Electric-powered, directional trolley JUNG JLA-e for loads up to 12 metric tons

- A** Electric-powered transport trolley for moving heavy loads.
- +** Excellent quality, for heavy jobs, easy to handle.
- N** According to norm DGUV V68.



**JLA-e 5/12 G**

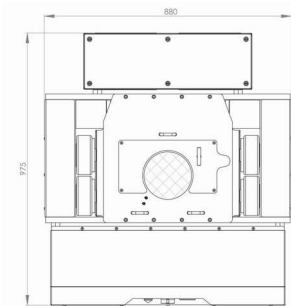
Type	Code	WLL (kg)	Pulling capacity (kg)	# wheels	Ø wheels x l (mm)	Height (mm)	C (mm)	L1 x B1 (mm)	Speed (m/min)	Operational time (h)	Weight (kg)
✚ JLA-e 5/12 G	22 005 100-G	5.000	12.000	4	140 x 59	180	150	760 x 880	10	3 - 4	174

✚ Bestseller

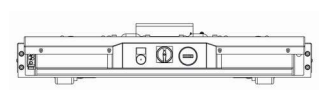
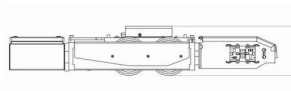
## JLA-e 5/12 G with stroke

Electric-powered, directional trolley JUNG JLA-e with stroke for loads up to 12 metric tons

- A** Electric-powered transport trolley for moving heavy loads.
- +** Excellent quality, for heavy jobs, easy to handle.  
The load can be moved in the extended state of the stroke.
- N** According to norm DGUV V68.



**JLA-e 5/12 G with stroke**



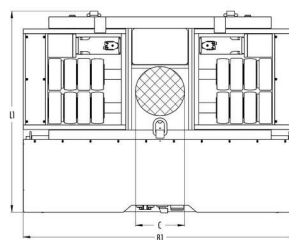
Type	Code	WLL (kg)	Pulling capacity (kg)	Stroke (mm)	# wheels	Ø wheels x l (mm)	Height (mm)	C (mm)	L1 x B1 (mm)	Speed (m/min)	Operationa time (h)	Weight (kg)
JLA-e 5/12 G with stroke	22 005 101-G HUB	5.000	12.000	50	4	140 x 59	180	170	975 x 880	10	3 - 4	195

✚ Bestseller

## JLA-e 15/30 G

Electric-powered, directional trolley JUNG JLA-e for loads up to 30 metric tons

- A** Electric-powered transport trolley for moving heavy loads.
- +** Excellent quality, for heavy jobs, easy to handle.
- N** According to norm DGUV V68.



**JLA-e 15/30 G**



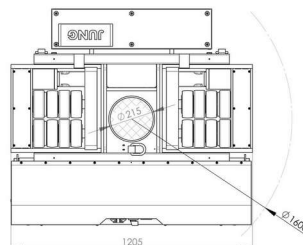
Type	Code	WLL (kg)	Pulling capacity (kg)	# wheels	Ø wheels x l (mm)	Height (mm)	C (mm)	L1 x B1 (mm)	Speed (m/min)	Operational time (h)	Weight (kg)
☛ JLA-e 15/30 G	22 015 100-G	15.000	30.000	16	140 x 59	180	215	882 x 1.205	6,5	5 - 6	305

☛ Bestseller

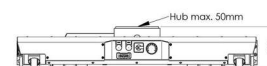
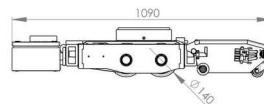
## JLA-e 15/30 G with stroke

Electric-powered, directional trolley JUNG JLA-e with stroke for loads up to 30 metric tons

- A** Electric-powered transport trolley for moving heavy loads.
- +** Excellent quality, for heavy jobs, easy to handle.  
The load can be moved in the extended state of the stroke.
- N** According to norm DGUV V68.



**JLA-e 15/30 G with stroke**



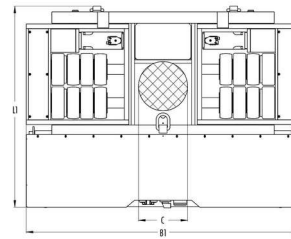
Type	Code	WLL (kg)	Pulling capacity (kg)	Stroke (mm)	# wheels	Ø wheels x l (mm)	Height (mm)	C (mm)	L1 x B1 (mm)	Speed (m/min)	Operational time (h)	Weight (kg)
JLA-e 15/30 G with stroke	22 015 101-G HUB	15.000	30.000	50	16	140 x 59	200	215	1.090 x 1.205	6,5	5 - 6	330

☛ Bestseller

## JLA-e 25/50 H

Electric-powered, directional trolley JUNG JLA-e for loads up to 25 metric tons

- A** Electric-powered transport trolley for moving heavy loads.
- +** Excellent quality, for heavy jobs, easy to handle.
- N** According to norm DGUV V68.



**JLA-e 25/50 H**



Type	Code	WLL (kg)	Pulling capacity (kg)	# wheels	Ø wheels x l (mm)	Height (mm)	C (mm)	L1 x B1 (mm)	Speed (m/min)	Operational time (h)	Weight (kg)
✚ JLA-e 25/50 H	22 025 100-H	25.000	50.000	16	200 x 83	230	250	1.180 x 1.760	10	3 - 4	685

✚ Bestseller

## JLA-e Set 1

Set of electric-powered trolleys JUNG JLA-e for loads up to 12 metric tons

- A** Set of electric-powered transport trolleys for moving heavy loads.
- +** Excellent quality, for heavy jobs, easy to handle.
- i** The set includes: 2x JLF3,5 and 1x JLF5, 2x pulling handles and 1x connecting bar. The 2nd pulling handle is used at the rear of the load and enables very tight curves.



**JLA-e Set 1**

Type	Code	WLL (kg)	Pulling capacity (kg)	Included products
✚ JLA-e Set 1	22 005 102-G SET	5.000 + 2 x 3.500	12.000	1 x JLA-e 5/12 G & 1 x JFB 7 K

✚ Bestseller

## JLA-e Set 2

Set of electric-powered trolleys JUNG JLA-e for loads up to 30 metric tons

- A** Set of electric-powered transport trolleys for moving heavy loads.
- +** Excellent quality, for heavy jobs, easy to handle.
- i** The set includes: 2x JLF3,5 and 1x JLF5, 2x pulling handles and 1x connecting bar. The 2nd pulling handle is used at the rear of the load and enables very tight curves.



**JLA-e Set 2**

Type	Code	WLL (kg)	Pulling capacity (kg)	Included products
☛ JLA-e Set 2	22 015 102-G SET	15.000 + 2 x 7.500	30.000	1 x JLA-e 15/30 G & 1 x JFB 15 G

☛ Bestseller

## JLA-e Set 3

Set of electric-powered trolleys JUNG JLA-e for loads up to 50 metric tons

- A** Set of electric-powered transport trolleys for moving heavy loads.
- +** Excellent quality, for heavy jobs, easy to handle.
- i** The set includes: 2x JLF3,5 and 1x JLF5, 2x pulling handles and 1x connecting bar. The 2nd pulling handle is used at the rear of the load and enables very tight curves.



**JLA-e Set 3**

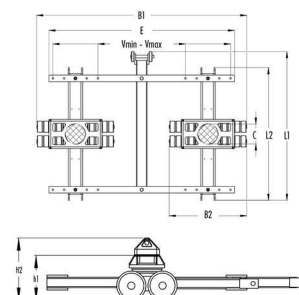
Type	Code	WLL (kg)	Pulling capacity (kg)	Included products
☛ JLA-e Set 3	22 025 102-H SET	25.000 + 2 x 12.500	50.000	1 x JLA-e 25/50 H & 1 x JFB 25 G

☛ Bestseller

## JTLB & JFB Weld-on Cone

Transport trolleys JUNG JTLB & JFB "Weld-on Cone" for containers up to 28 metric tons

- A** Transport trolley for moving heavy loads.
- +** Excellent quality, for heavy jobs, easy to handle. Twin castors.



**Up: JTLB 14 Weld-on Cone  
Down: JFB 14 K Weld-on Cone**

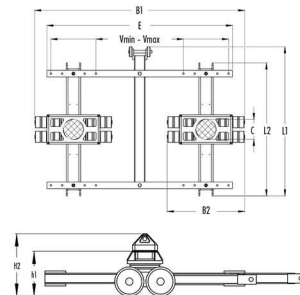
Type	Code	h1 (mm)	h2 (mm)	V (mm)	L1 x B1 (mm)
☛ JTLB 14 K WOC	12 121 085-WZ	110	170	2.260	1.110 x 2.850
☛ JFB 14 K WOC	08 141 085-WOC	110	170	2.260	325 x 2.650

☛ Bestseller

## JTL(B) & JFB Twistlock

Transport trolleys JUNG JTL, JTLB & JFB "Twistlock" for containers up to 60 metric tons

- A** Transport trolley for moving heavy loads.
- +** Excellent quality, for heavy jobs, easy to handle.  
Twin castors.



**Up: JTL(B) Twistlock**  
**Down: JFB Twistlock**



**JTLB Twistlock**

**JTLB Twistlock**

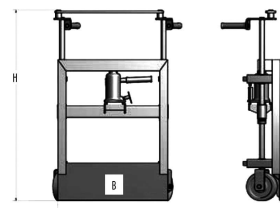
Type	Code	h1 (mm)	h2 (mm)	V (mm)	L1 x B1 (mm)
✱ JTL 20 G TL	12 202 140-TL	215	300	2.260	1.260 x 2.700
✱ JFB 20 G TL	10 202 140-TL	215	300	2.260	460 x 3.000
✱ JTLB 30 G TL	12 302 140-TL	215	300	2.260	1.620 x 2.870
✱ JFB 30 G TL	10 302 140-TL	215	300	2.260	460 x 3.000

✱ Bestseller

## JHT-S

Hydro-transporter JUNG JHT-S for loads up to 3,8 metric tons

- A** Transport trolley for moving heavy loads.
- +** Excellent quality, for heavy jobs, easy to handle.



**JHT-S**



Type	Code	WLL (kg)	Stroke (mm)	B (mm)	H (mm)	Belt length (mm)	Ø wheels (mm)	Weight (kg)
✱ JHT 18 S	30 181 002-H	1.800	180	540	1.010	5.000	150	82
✱ JHT 30 S	30 301 001-H	3.000	180	585	1.080	5.000	200	103
✱ JHT 38 S	30 351 002-H	3.800	180	640	1.080	5.000	200	107

✱ Bestseller

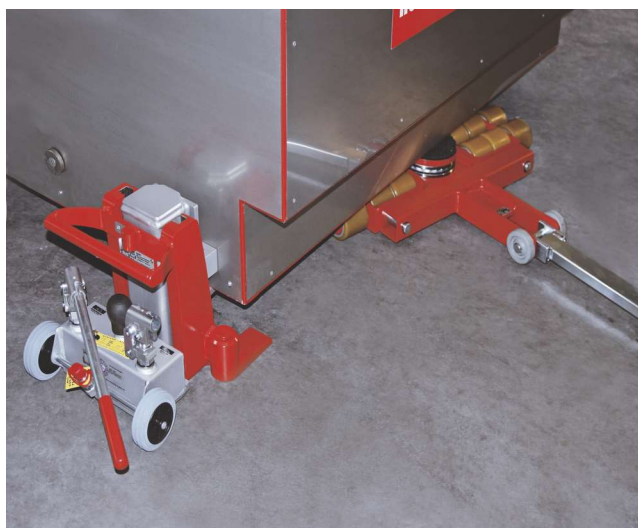




**Container traverse**



**Transport box JLA-e 15/30**



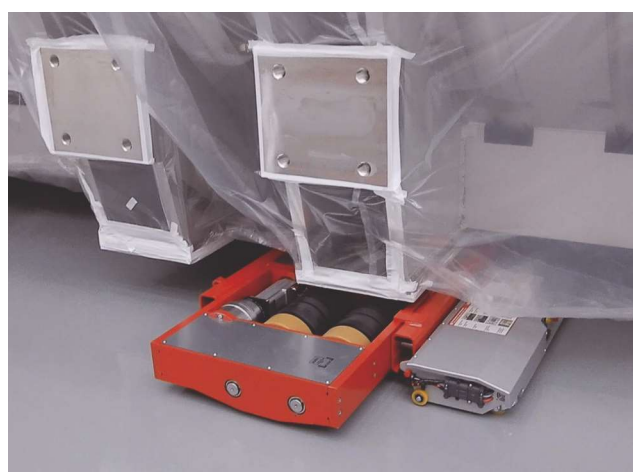
**Jack and transport trolley**



**Wheel series K professional**



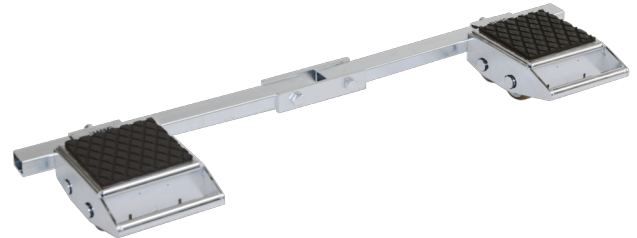
**Revolving transport trolleys JKB**



**Electric-powered, directional trolley JLA-e cleanroom**



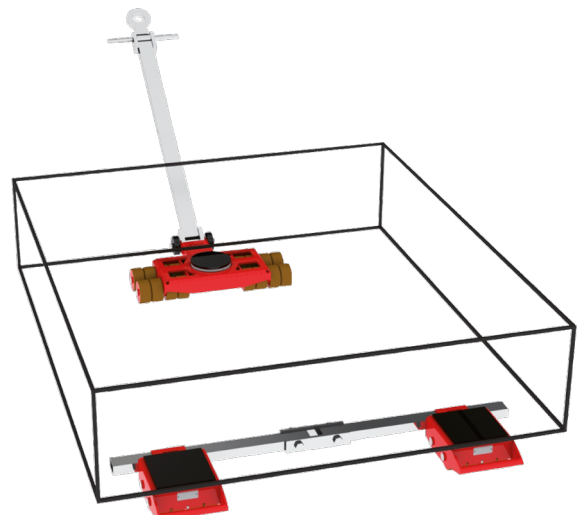
**Forklift clamps JGK**



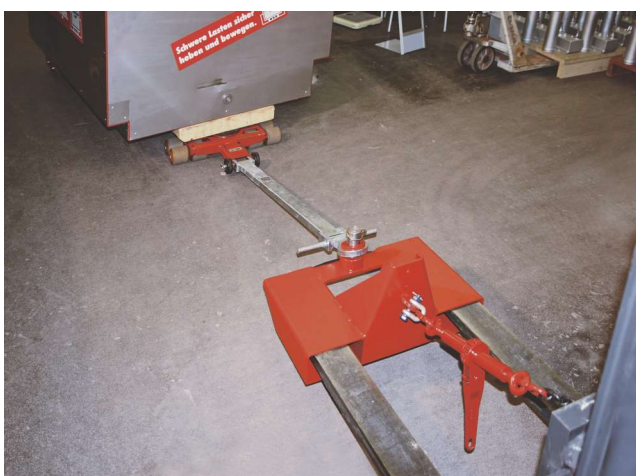
**Transport trolleys in galvanised version**



**Group JD**



**Transport trolleys JLB & JBK 7 K**



**Forklift hitch JRH 3**



**Transport trolley with cylinder**



### TRV

Fixed transport trolley TRV for loads up to 6 metric tons

- A** Transport trolley for moving heavy loads.
- +** Nylon rollers running on ball bearings.  
Nylon rollers will not damage floors.  
Platforms have anti-slip rubber coatings.  
Can be easily placed or positioned by means of the hand grip.
- N** According to norm EN 12100.



**TRV**

Type	WLL (kg)	N° axes	N° of rollers	Ø rollers (mm)	Length support (mm)	Width support (mm)	Total height (mm)	Weight (kg)
⊕ TRV-10	1.000	2	4	100	330	220	118	7
⊕ TRV-20	2.000	2	8	100	330	220	118	8
⊕ TRV-25	2.500	2	2	85	210	110	105	4
⊕ TRV-30	3.000	2	4	85	330	220	100	10
TRV-60	6.000	3	6	85	260	200	105	12

⊕ Bestseller

### TRS

Directional transport trolley TRS for loads up to 12 metric tons

- A** Transport trolley for moving heavy loads.
- +** The steering platform skate running on bearings makes manoeuvring with heavy loads easier.  
Nylon rollers running on bearings except for models TRS-120 (fitted with steel rollers). Nylon rollers will not damage floors.  
Platforms have anti-slip rubber coatings.  
Can be easily placed or positioned by means of the hand grip.
- N** According to norm EN 12100.



**TRS**

Type	WLL (kg)	N° of rollers	Ø rollers (mm)	Length support (mm)	Width support (mm)	Total height (mm)	Weight (kg)
⊕ TRS-30	3.000	4	85	310	255	105	15
TRS-60	6.000	8	85	630	400	115	50
TRS-120	12.000	8	83	630	400	115	66

⊕ Bestseller

## TRW

Fixed transport trolley TRV for loads up to 24 metric tons

- A** Transport trolley for moving heavy loads.
- +** Platforms have anti-slip rubber coatings.  
Nylon rollers running on bearings except for models TRW-240 (fitted with steel rollers).
- N** According to norm EN 12100.
- i** Additional information on the transport trolleys, TRW;
  - Roller skates can be joined by means of two connecting rods.
  - Roller skates are supplied in pairs incl. 2 connecting rods.



**TRW**

	Type	WLL (kg)	N° of rollers	Ø rollers (mm)	Length support (mm)	Width support (mm)	Total height (mm)	Weight (kg)
🔥	TRW-60	2 x 3.000	8	85	315	200	115	30
	TRW-120	2 x 6.000	12	85	420	200	115	38
	TRW-240	2 x 12.000	16	83	490	220	115	65

🔥 Bestseller

### Series N & N-PA6

#### Roller skate series N & N-PA6

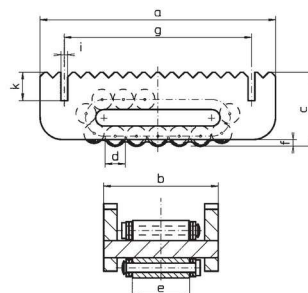
- i** Additional information on the roller skate, series N & N-PA6:
- For short variable ways of transportation.
  - Movement of moderately heavy loads, e.g. machines, parts of machines and for installation works.
  - A speed of 5 m/min should not be exceeded.
  - Allows to turn corners by swivelling. Turntables are placed on top of the skate, handles are to be attached. Only guide with the handle, while the Roller Skate is moving. Minimum turning circle is 3m.
  - The difference in height of skates with the turntables is compensated for by the use of packing plates.
  - Easy visual control for the alignment and direction of the load is made by inserting the angle iron into the slots provided on the Roller Skate.
  - Stable, solid, basic construction.
  - Low level construction.
  - Accessories for turning corners.
  - Possible problems can be avoided by choosing Roller Skate models with a larger roller diameter within the chain.
  - For safety, the carrying capacities on complete sets are calculated so that on uneven surfaces 2 Roller Skates could support the full load.
  - Due to the little effort required to overcome the rolling resistance (4 -7% of the total load) precautionary measures must be taken for use on inclined surfaces.

#### Additional information on the roller skate, series N:

- The track surface is important for the safe transportation of the load, not the carrying capacity of the Roller Skate. Tiles are insufficient. The movement on tarmac and concrete is restricted. In these cases a steel plate of a minimum of 10 mm thickness is recommended.
- All maximum carrying capacities are based for use on a steel surface, which withstands the high pressure of the chain-rollers.

#### Additional information on the roller skate, series N-PA6:

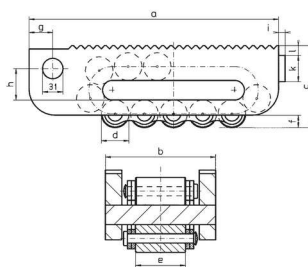
- Can be used on concrete floors without damaging the surface.



Mod. I-III



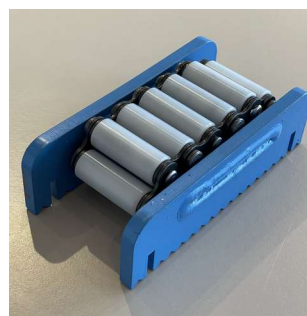
Series N



Mod. IV-V



Series N-PA6



Series N-PA6

Code	WLL (t)	a (mm)	b (mm)	c (mm)	Ø d (mm)	e (mm)	f (mm)	g (mm)	h (mm)	i (mm)	k (mm)	l (mm)	Rollers under stress	N° of rollers	Weight (kg)
<b>N</b>															
⊗ I	10	210	100	66	18	51	6	167		6	25		5	15	5,2
⊗ II	15	220	113	75	24	60	10	180		6	25		4	13	7,3
⊗ III	30	270	130	92	30	68	10	217		6	25		4	13	13
IV	60	380	168	127	42	76	16	36	48	10	40	15	4	13	32
V	80	530	182	147	50	86	19	36	60	10	40	15	6	17	61
<b>N-PA6</b>															
II	6	220	113	75	24	60	10	180		6	25		4	13	6,5
III	10	270	130	92	30	68	10	217		6	25		4	13	11

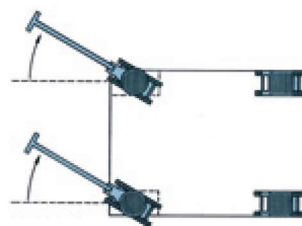
⊗ Bestseller

## Series N & N-PA6: set in metal box

Set in metal box series N & N-PA6

**i** The complete set consists of :

- 4 roller skates N or N-PA6
- 2 turntables
- 2 packing plates
- 2 handles
- 2 link-up bars



**Set N**



**Set N-PA6**

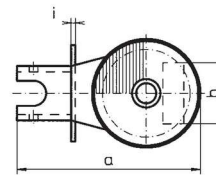
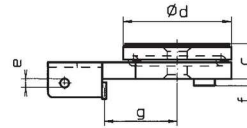
	Code	WLL (t)	Ø rollers (mm)	Length support (mm)	Width support (mm)	Total height (mm)	Ø swivel (mm)	Weight set (kg)
<b>N Kit</b>								
☼	I	20	18	120	120	108	130	48
☼	II	30	24	120	120	117	130	56
☼	III	60	30	130	130	140	150	90
<b>N-PA6 Kit</b>								
	II	12	24	120	120	117	130	53
	III	20	30	130	130	140	150	82

☼ Bestseller

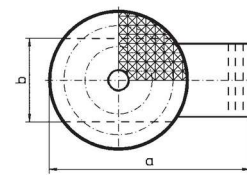
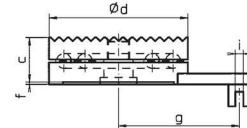
## Series N: swivel

Turntable for rollers series N

- i** Additional information on the turntable:
- Necessary for turning corners: Turntables are to be placed on top, handle has to be attached; only guide while Roller Skate is moving. Minimum turning circle is 3 m.
  - Necessary for use with turntable: packing plate for compensating the difference in height between Skates with turntables and the ones without.



**Mod. I-III**



**Mod. IV-V**



**Swivel series N**

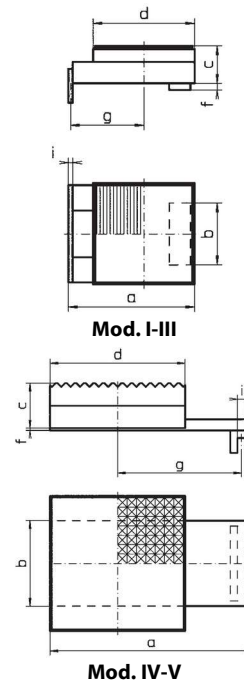
Code	a (mm)	b (mm)	c (mm)	Ø d (mm)	e (mm)	f (mm)	g (mm)	i (mm)	Weight (kg)
<b>N Turntable</b>									
⊕ I	220	73	42	130	11	8	87	5	4,5
⊕ II	220	86	42	130	11	8	87	5	4,5
⊕ III	250	96	48	150	11	8	108	5	6,7
IV	275	114	61	190		3	165	11	13,7
V	360	128	61	220		3	235	11	18,9

⊕ Bestseller

## Series N: packing plate

Levelling plate for rollers series N

- i** Additional information on the levelling plate:
- For compensating the difference in height between Skates with turntables and the ones without.



**Packing plate series N**

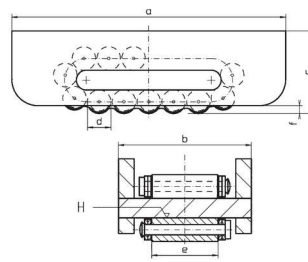
Code	a (mm)	b (mm)	c (mm)	d (mm)	f (mm)	g (mm)	i (mm)	Weight (kg)
<b>N Packing plate</b>								
⊕ I	149	73	42	120	8	87	5	3,7
⊕ II	149	86	42	120	8	87	5	3,7
⊕ III	178	96	48	130	8	108	5	5,3
IV	270	114	61	180	3	165	11	13,8
V	350	128	61	200	3	235	11	18,8

⊕ Bestseller

## Series C

### Roller skate series C

- i** Additional information on the roller skate, series C:
- Execution H = hardened center plate.
  - Execution H-50CrV4 = hardened center plate and chain rollers with higher tensile steel material 50CrV4.
  - These series have an upper surface of the frame which is parallel to the middle support, resulting in a very precise construction height. We can therefore use these rollers as a runway, where the load rolls while the roller remains in place, for example by welding.
  - Execution C is the series with the lowest building height of all rollers.



**Series C**

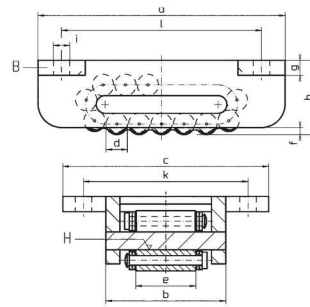
Code	WLL (t)	a (mm)	b (mm)	c (mm)	Ø d (mm)	e (mm)	f (mm)	Rollers under stress	N° of rollers	Weight (kg)
<b>C</b>										
I	10	210	100	63	18	51	6	5	15	5
II	15	220	113	73	24	60	10	4	13	7
III	30	270	130	90	30	68	10	4	13	12,5
IV	60	380	168	126	42	76	19	4	13	32
V	80	530	182	146	50	86	19	6	17	61
<b>C-H</b>										
I	10	210	100	63	18	51	6	5	15	5
II	15	220	113	73	24	60	10	4	13	7
III	30	270	130	90	30	68	10	4	13	12,5
IV	60	380	168	126	42	76	19	4	13	32
V	80	530	182	146	50	86	19	6	17	61
<b>C-H-50CrV4</b>										
I	10	210	100	63	18	51	6	5	15	5
II	15	220	113	73	24	60	10	4	13	7
III	30	270	130	90	30	68	10	4	13	12,5
IV	60	380	168	126	42	76	19	4	13	32
V	80	530	182	146	50	86	19	6	17	61

☛ Bestseller

## Series B

### Roller skate series B

- i** Additional information on the roller skate, series B:
- Execution H = hardened center plate.
  - Execution H-50CrV4 = hardened center plate and chain rollers with higher tensile steel material 50CrV4.
  - Series B offers the lowest construction height when the roller is to be bolted to the load.
  - The increased support surface ensures a better distribution of the load and therefore a better stability. This surface is machined and parallel to the medial support.
  - Use support B for short movements. If the Rollers are being used to their maximum carrying capacity or with lengthy intervals between use choose models with a hardened centre plate (-H). In case of possible overload, choose also better chain rollers (-50CrV4) (B.S. 735 A 50; SAE 6150).
  - Can also be used as a runway.



**Series B**

Code	WLL (t)	a (mm)	b (mm)	c (mm)	Ø d (mm)	e (mm)	f (mm)	g (mm)	h (mm)	Ø i (mm)	k (mm)	l (mm)	Rollers under stress	N° of rollers	Weight (kg)
<b>B</b>															
⊗ I	10	210	100	175	18	51	6	13	63	14	140	170	5	15	6,2
⊗ II	15	220	113	190	24	60	10	14	73	14	155	180	4	13	8,4
⊗ III	30	270	130	210	30	68	10	14	90	18	175	220	4	13	14,1
IV	60	380	168	270	42	76	19	19	126	22	220	320	4	13	36,5
V	80	530	182	300	50	86	19	19	146	22	240	470	6	17	66,4
<b>B-H</b>															
I	10	210	100	175	18	51	6	13	63	14	140	170	5	15	6,2
II	15	220	113	190	24	60	10	14	73	14	155	180	4	13	8,4
III	30	270	130	210	30	68	10	14	90	18	175	220	4	13	14,1
IV	60	380	168	270	42	76	19	19	126	22	220	320	4	13	36,5
V	80	530	182	300	50	86	19	19	146	22	240	470	6	17	66,4
<b>B-H-50CrV4</b>															
I	10	210	100	175	18	51	6	13	63	14	140	170	5	15	6,2
II	15	220	113	190	24	60	10	14	73	14	155	180	4	13	8,4
III	30	270	130	210	30	68	10	14	90	18	175	220	4	13	14,1
IV	60	380	168	270	42	76	19	19	126	22	220	320	4	13	36,5
V	80	530	182	300	50	86	19	19	146	22	240	470	6	17	66,4

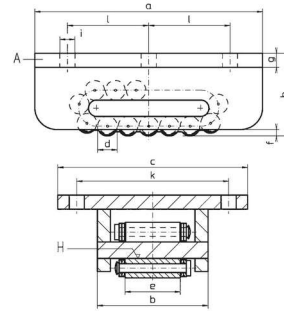
⊗ Bestseller



### Series A

#### Roller skate series A

- i** Additional information on the roller skate, series A:
- Execution H = hardened center plate.
  - Execution H-50CrV4 = hardened center plate and chain rollers with higher tensile steel material 50CrV4.
  - The main feature of this series is its large welded plate with mounting holes.
  - Robust and reinforced construction, bolting the load, good distribution and constant height. For difficult working conditions, on construction sites for example.
  - Model A is used for short movements. If the Rollers are being used to their maximum carrying capacity or with lengthy intervals between use, choose models with a hardened centre plate (-H). In case of possible overload, choose also better chain rollers (-50CrV4) (B.S. 735 A 50; SAE 6150).



**Series A**

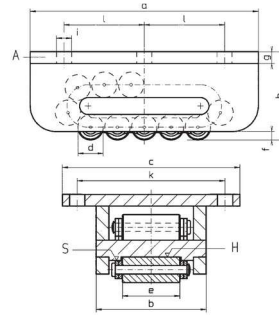
Code	WLL (t)	a (mm)	b (mm)	c (mm)	Ø d (mm)	e (mm)	f (mm)	g (mm)	h (mm)	Ø i (mm)	k (mm)	l (mm)	Rollers under stress	N° of rollers	Weight (kg)
<b>A</b>															
⊕ I	15	210	100	175	18	51	6	13	76	14	140	75	5	15	8,9
⊕ II	20	220	113	190	24	60	10	14	87	14	155	75	4	13	11,7
⊕ III	40	270	130	210	30	68	10	14	104	18	175	95	4	13	19,3
IIIv	50	320	140	220	30	68	10	18	115	18	180	120	6	17	29
IV	65	380	168	270	42	76	19	19	145	22	220	140	4	13	51
V	85	530	182	300	50	86	19	19	165	22	240	205	6	17	92
<b>A-H</b>															
⊕ I	15	210	100	175	18	51	6	13	76	14	140	75	5	15	8,9
⊕ II	20	220	113	190	24	60	10	14	87	14	155	75	4	13	11,7
⊕ III	40	270	130	210	30	68	10	14	104	18	175	95	4	13	19,3
IIIv	50	320	140	220	30	68	10	18	115	18	180	120	6	17	29
IV	65	380	168	270	42	76	19	19	145	22	220	140	4	13	51
V	85	530	182	300	50	86	19	19	165	22	240	205	6	17	92
<b>A-H-50CrV4</b>															
I	15	210	100	175	18	51	6	13	76	14	140	75	5	15	8,9
II	20	220	113	190	24	60	10	14	87	14	155	75	4	13	11,7
III	40	270	130	210	30	68	10	14	104	18	175	95	4	17	19,3
IIIv	50	320	140	220	30	68	10	18	115	18	180	120	6	13	29
IV	65	380	168	270	42	76	19	19	145	22	220	140	4	13	51
V	85	530	182	300	50	86	19	19	165	22	240	205	6	17	92

⊕ Bestseller

## Series AS

### Roller skate series AS

- i** Additional information on the roller skate, series AS:
- Execution H = hardened center plate.
  - Execution H-50CrV4 = hardened center plate and chain rollers with higher tensile steel material 50CrV4.
  - Roller identical to those of the A series (construction and dimensions). It is, however, stronger.
  - For longer distances and/or permanent loads. If problems of load distribution occur e.g. by wind forces, it is necessary to choose model AS-H-50CrV4.



**Series AS**

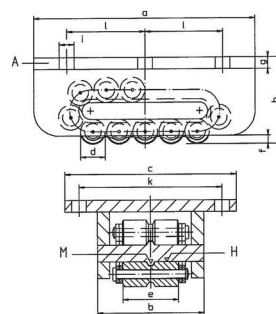
Code	WLL (t)	a (mm)	b (mm)	c (mm)	Ø d (mm)	e (mm)	f (mm)	g (mm)	h (mm)	Ø i (mm)	k (mm)	l (mm)	Rollers under stress	N° of rollers	Weight (kg)
<b>AS-H</b>															
III	40	270	130	210	30	68	10	14	104	18	175	95	4	13	19,6
IIIv	50	320	140	220	30	68	10	18	115	18	180	120	6	17	29,5
IV	65	380	168	270	42	76	19	19	145	22	220	140	4	13	51,7
V	85	530	182	300	50	86	19	19	165	22	240	205	6	17	93
VL	100	580	182	300	50	86	19	23	170	26	250	250	8	21	109
Vv	150	650	205	350	50	100	20	28	190	26	280	240	9	23	162
VI	200	900	205	380	50	100	20	38	200	33	300	360	13	31	266
<b>AS-H-50CrV4</b>															
III	40	270	130	210	30	68	10	14	104	18	175	95	4	13	19,6
IIIv	50	320	140	220	30	68	10	18	115	18	180	120	6	17	29,5
IV	65	380	168	270	42	76	19	19	145	22	220	140	4	13	51,7
V	85	530	182	300	50	86	19	19	165	22	240	205	6	17	93
VL	100	580	182	300	50	86	19	23	170	26	250	250	8	21	109
Vv	150	650	205	350	50	100	20	28	190	26	280	240	9	23	162
VI	200	900	205	380	50	100	20	38	200	33	300	360	13	31	266

☛ Bestseller

## Series AM

### Roller skate series AM

- i** Additional information on the roller skate, series AM:
- Execution H = hardened center plate.
  - Execution H-50CrV4 = hardened center plate and chain rollers with higher tensile steel material 50CrV4.
  - Apart from the characteristics identical to those of the series A, these rollers have in addition a median guidance on the periphery of the support. This guiding avoids friction of the rollers against the flanges as well as damage on the rivet heads of the chain.
  - By this design, this roller is particularly suitable for use where the axis of the rollers must be vertical.
  - For longer distances and/or permanent loads. If problems of load distribution occur e.g. by wind forces, it is necessary to select model AM-H-50CrV4.



**Series AM**

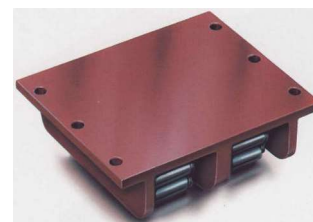
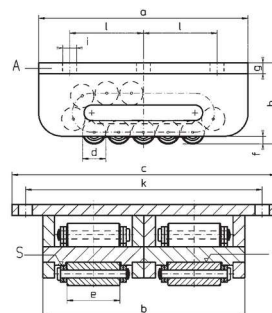
Code	WLL (t)	a (mm)	b (mm)	c (mm)	Ø d (mm)	e (mm)	f (mm)	g (mm)	h (mm)	Ø i (mm)	k (mm)	l (mm)	Rollers under stress	N° of rollers	Weight (kg)
<b>AM-H</b>															
I	12,5	210	100	175	18	51	6	13	76	14	140	75	5	15	8,8
II	17	220	113	190	24	60	10	14	87	14	155	75	4	13	11,5
III	33	270	130	210	30	68	10	14	104	18	175	95	4	13	19
IIIv	42	320	140	220	30	68	10	18	115	18	180	120	6	17	28,5
IV	53	380	168	270	42	76	19	19	145	22	220	140	4	13	50
V	69	530	182	300	50	86	19	19	165	22	240	205	6	17	89,5
VL	88	580	182	300	50	86	19	23	170	26	250	250	8	21	104
Vv	125	650	205	350	50	100	20	28	190	26	280	240	9	23	156
VI	165	900	205	380	50	100	20	38	200	33	300	360	13	31	237
<b>AM-H-50CrV4</b>															
I	12,5	210	100	175	18	51	6	13	76	14	140	75	5	15	8,8
II	17	220	113	190	24	60	10	14	87	14	155	75	4	13	11,5
III	33	270	130	210	30	68	10	14	104	18	175	95	4	13	19
IIIv	42	320	140	220	30	68	10	18	115	15	180	120	6	17	28,5
IV	53	380	168	270	42	76	19	19	145	22	220	140	4	13	50
V	69	530	182	300	50	86	19	19	165	22	240	205	6	17	89,5
VL	88	580	182	300	50	86	19	23	170	26	250	250	8	21	104
Vv	125	650	205	350	50	100	20	28	190	26	280	240	9	23	156
VI	165	900	205	380	50	100	20	38	200	33	300	360	13	31	237

Bestseller

## Series ZAS

### Roller skate series ZAS

- i** Additional information on the roller skate, series ZAS:
- Execution H = hardened center plate.
  - Execution H-50CrV4 = hardened center plate and chain rollers with higher tensile steel material 50CrV4.
  - Roller similar to AS series, but with double roller skates separated by a centre plate.
  - For longer distances and repeat journeys with permanent loads.
  - If problems of load distribution occur e.g. by wind forces, it is necessary to select model ZAS-H-50CrV4..



**Series ZAS**

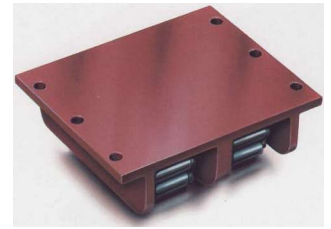
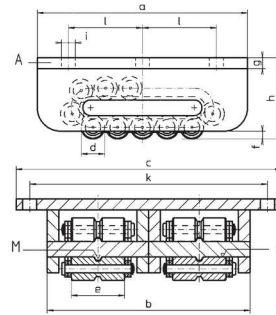
Code	WLL (t)	a (mm)	b (mm)	c (mm)	Ø d (mm)	e (mm)	f (mm)	g (mm)	h (mm)	Ø i (mm)	k (mm)	l (mm)	Rollers under stress	N° of rollers	Weight (kg)
<b>ZAS-H</b>															
III	80	270	260	340	30	68	10	14	104	18	305	95	2 x 4	2 x 13	36,2
IIIv	100	320	280	360	30	68	10	18	115	18	325	120	2 x 6	2 x 17	57,5
IV	130	380	336	440	42	76	19	19	145	22	390	150	2 x 4	2 x 13	96
V	170	530	364	480	50	86	19	19	165	22	430	210	2 x 6	2 x 17	175
VL	200	580	364	480	50	86	19	23	170	26	430	250	2 x 8	2 x 21	207
Vv	300	650	410	560	50	100	20	28	190	26	490	240	2 x 9	2 x 23	305
VI	400	900	410	590	50	100	20	38	200	33	500	360	2 x 13	2 x 31	485
<b>ZAS-H-50CrV4</b>															
III	80	270	260	340	30	68	10	14	104	18	305	95	2 x 4	2 x 13	36,2
IIIv	100	320	280	360	30	68	10	18	115	18	325	120	2 x 6	2 x 17	57,5
IV	130	380	336	440	42	76	19	19	145	22	390	150	2 x 4	2 x 13	96
V	170	530	364	480	50	86	19	19	165	22	430	210	2 x 6	2 x 17	175
VL	200	580	364	480	50	86	19	23	170	26	430	250	2 x 8	2 x 21	207
Vv	300	650	410	560	50	100	20	28	190	26	490	240	2 x 9	2 x 23	305
VI	400	900	410	590	50	100	20	38	200	33	500	360	2 x 13	2 x 31	485

Bestseller

## Series ZAM

### Roller skate series ZAM

- i** Additional information on the roller skate, series ZAM:
- Execution H = hardened center plate.
  - Execution H-50CrV4 = hardened center plate and chain rollers with higher tensile steel material 50CrV4.
  - Roller similar to AM series, but with double roller skates separated by a centre plate.
  - For longer distances and repeat journeys with permanent loads.
  - If problems of load distribution occur e.g. by wind forces, it is necessary to select model ZAM-H-50CrV4.



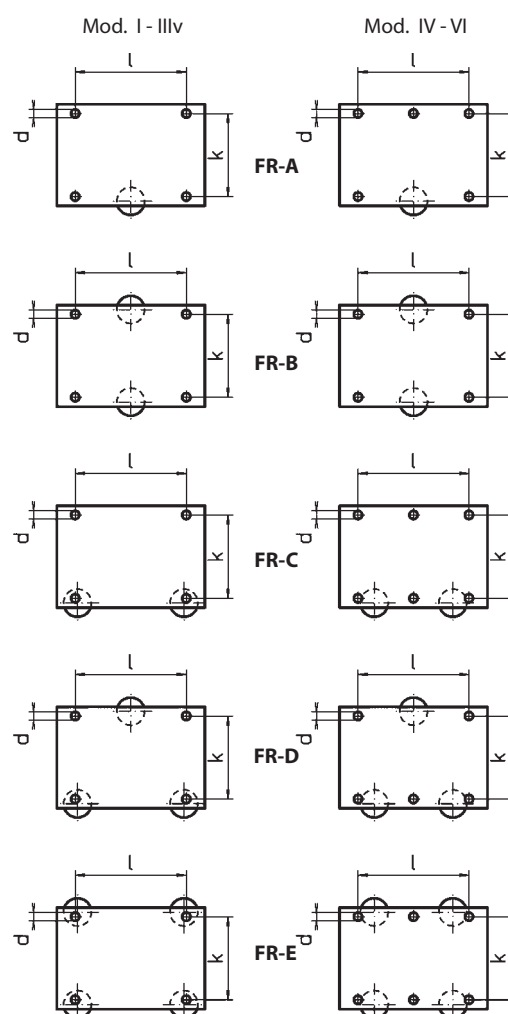
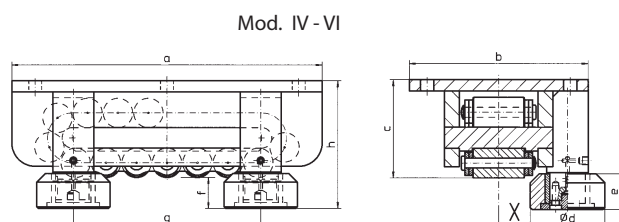
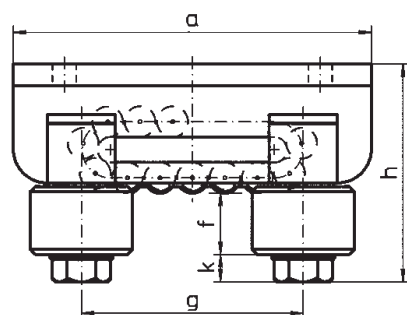
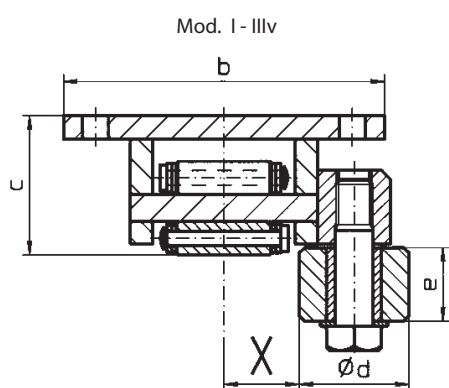
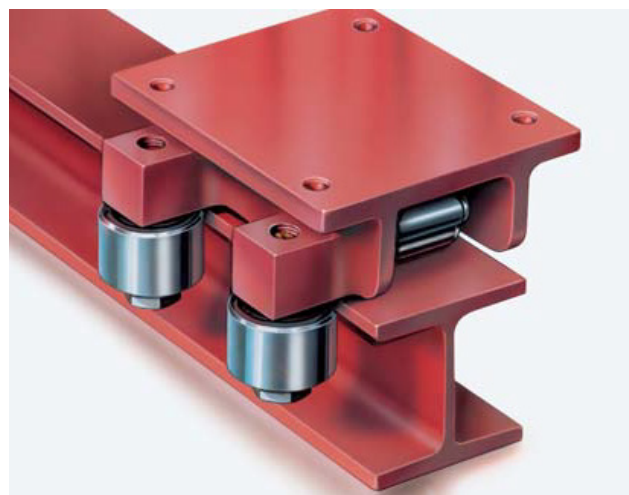
**Series ZAM**

Code	WLL (t)	a (mm)	b (mm)	c (mm)	Ø d (mm)	e (mm)	f (mm)	g (mm)	h (mm)	Ø i (mm)	k (mm)	l (mm)	Rollers under stress	N° of rollers	Weight (kg)
<b>ZAM-H</b>															
I	25	210	200	280	18	51	6	13	76	14	245	75	2 x 5	2 x 15	16
II	34	220	226	305	24	60	10	14	87	14	270	80	2 x 4	2 x 13	22
III	66	270	260	340	30	68	10	14	104	18	305	95	2 x 4	2 x 13	35
IIIv	84	320	280	360	30	68	10	18	115	18	325	120	2 x 6	2 x 17	55,5
IV	106	380	336	440	42	76	19	19	145	22	39	150	2 x 4	2 x 13	92,5
V	138	530	364	480	50	86	19	19	165	22	430	210	2 x 6	2 x 17	168
VL	176	580	364	480	50	86	19	23	170	26	430	250	2 x 8	2 x 21	197
Vv	250	650	410	560	50	100	20	28	190	26	490	240	2 x 9	2 x 23	294
VI	330	900	410	590	50	100	20	38	200	33	500	360	2 x 13	2 x 31	432
<b>ZAM-H-50CrV4</b>															
I	25	210	200	280	18	51	6	13	76	14	245	75	2 x 5	2 x 15	16
II	34	220	226	305	24	60	10	14	87	14	270	80	2 x 4	2 x 13	22
III	66	270	260	340	30	68	10	14	104	18	305	95	2 x 4	2 x 13	35
IIIv	84	320	280	360	30	68	10	18	115	18	325	120	2 x 6	2 x 17	55,5
IV	106	380	336	440	42	76	19	19	145	22	390	150	2 x 4	2 x 13	92,5
V	138	530	364	480	50	86	19	19	165	22	430	210	2 x 6	2 x 17	168
VL	176	580	364	480	50	86	19	23	170	26	430	250	2 x 8	2 x 21	197
Vv	250	650	410	560	50	100	20	28	190	26	490	240	2 x 9	2 x 23	294
VI	330	900	410	590	50	100	20	38	200	33	500	360	2 x 13	2 x 31	432

• Bestseller

**Optionally available guide rollers for the robust and super-robust roller skates, A-H, AS-H & AM-H**

- Robust & almost maintenance-free; welded construction able to maintain a defined direction.
- For longer distances and repeat journeys with permanent loads, on suitable tracks such as crane rails or steel beams.
- Dimension «X» equals the distance between the inner edge of the guide rollers and the centre of the roller skate.
- Standard «X» dimensions: see table. Other dimensions also available. Please inform us about track type and required «X» dimension.
- Determine the number and arrangement of guide rollers based on the parallelism of the track on which the roller is placed. If parallelism of tracks is uncertain, it is advisable to locate the guide roller on one profile edge only and then employ 4 guide rollers on each Skate (FR-E). If parallelism is assured it is sufficient to use 2 guide rollers on each Skate (FR-C), bearing on both tracks.
- Position of fixing holes in top plate of Skate can be arranged to suit customers' requirement.
- Maximum speed: 5m / min.



Mod.	a	b	c	Ø d	e	f	g	h	k	x min.	x max.	Admissible radial force per guide roller (kN)
I	210	175	76	60	40	36	130	128	16	35	80	10
II	220	190	87	60	40	32	140	135	16	42	90	10
III	270	210	104	60	40	32	180	152	16	50	110	10
IIIv	320	220	115	60	40	32	230	163	16	55	115	10
IV	380	270	145	125	60	50	160	195	-	45	150	100
V	530	300	165	125	60	50	280	215	-	50	160	100
VL	580	300	170	125	60	50	340	220	-	50	160	100
Vv	650	350	190	170	60	50	340	240	-	50	170	150
VI	900	380	200	170	60	50	550	250	-	50	170	150

All dimensions in mm