

PLATFORM LADDERS	2
STEP LADDERS	10
LADDERS WITH RUNGS AND STEPS	14
LADDER ACCESSORIES	17
SCAFFOLDING	19
VERTICAL LADDERS	22
SPECIAL LADDERS	23
WIRE ROPE LADDERS	24
ROPE LADDERS	25

6875

Aluminium step Hymer 6875

N According to norm EN 14183.

- i** Additional information on the step, Hymer 6875:
- Comfortable working through large standing surface.
 - Step depth 232 mm, upper step 355 mm.
 - Vertical step distance 240 mm.
 - Permissible load of 150 kg.
 - Fixed castor set to relocate the step and lateral guardrail available as an accessory.



6875

HYMER

	Code	Number of steps	Stile (mm)	Standing height (m)	Reach height (m)	Top step width (mm)	Bottom step width (mm)	Overhang (m)	Weight (kg)
🔗	687526	2	40	0,48	2,48	585	600	0,68	7,1
🔗	687536	3	40	0,72	2,72	571	600	0,95	9,7
🔗	687546	4	40	0,96	2,96	556	600	1,21	11,4

🔗 Bestseller

6060

Safety step without handrail Hymer 6060

N According to norm EN 14183.

- i** Additional information on the step, Hymer 6060:
- Extremely stable, folding safety step.
 - Safe ascent and descent thanks to 47° angle of inclination.
 - Step width 360 mm and step depth 230 mm with non-slip rubber coating.
 - High tensile and pressure-resistant bracing between ladder and support section.



6060

HYMER

	Code	Number of steps	Standing height (m)	Reach height (m)	Width (mm)	Folded LxWxH (m)	Base width (m)	Weight (kg)
🔗	606002	2	0,45	2,45	480	0,55 x 0,49 x 0,08	0,55	5,0
🔗	606003	3	0,70	2,70	560	1,12 x 0,55 x 0,08	0,90	8,4

🔗 Bestseller

6878

Machine step 6878

- + • Comfortable and safe standing for longer periods of work thanks to the large platform.
- Non-slip, convenient ascent thanks to the large step.
- Extremely high stability for heavy-duty use.
- Lightweight for ergonomic positioning.
- Permissible load 150 kg.

N According to norm EN 14183.

- i** Additional information on the machine step, Hymer 6878:
- The number of steps includes the platform
 - Platform dimensions 580 x 350 mm.
 - Optionally movable using castors.
 - Also available with R13 antislip coating on the entire step surface.



6878

HYMER

	Code	Number of steps	Standing height (m)	Reach height (m)	Width top / bottom (mm)	Overhang (m)	Weight (kg)
☉	6878163	1	0,20	2,20	600	0,38	2,8
☉	6878263	2	0,40	2,40	680	0,63	5,6
☉	6878363	3	0,60	2,60	700	0,87	8,2
☉	6878463	4	0,80	2,80	730	1,10	10,8
☉	6878563	5	1,00	3,00	760	1,34	14,6

☉ Bestseller

2271

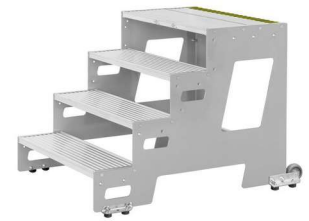
Industrial step Hymer 2271

- + • Comfortable and safe standing for longer periods of work thanks to the large platform.
- Non-slip, convenient ascent thanks to the large step.
- Extremely high stability for heavy-duty use.
- Can be combined with different assembly variations.
- Ideal for stationary installation.
- Permissible load 150 kg.

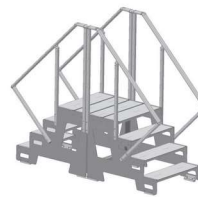
N According to norm EN 14183.

- i** Additional information on the industrial step, Hymer 2271:
- Step depth 250 mm (aluminium profile steps).
 - Step depth top step approx. 470 mm.
 - Optional: Ergonomically shaped handrails on both sides.
 - Available as steel or aluminium grating on request.

HYMER



2271



Extension

Code	Number of steps	Step width(mm)	Standing height (m)	Reach height (m)	Overhang (m)	Weight (kg)
22710602	2	600	0,40	2,40	0,78	14,5
22710603	3	600	0,60	2,60	1,05	23,0
22710604	4	600	0,80	2,80	1,25	29,5
☼ 22710802	2	800	0,40	2,40	0,78	16,0
☼ 22710803	3	800	0,60	2,60	1,05	25,0
☼ 22710804	4	800	0,80	2,80	1,25	32,0
22711002	2	1000	0,40	2,40	0,78	17,5
22711003	3	1000	0,60	2,60	1,05	27,0
22711004	4	1000	0,80	2,80	1,25	34,5

☼ Bestseller

71020

Servicing and assembly step Hymer 71020

- + • Ergonomic working on 80 mm step depth.
- Stable platform with a large standing surface.
- High stability provided by welded stile-rung connection.
- Rigid braces prevent accidental folding.
- Requires little space to transport and store.
- Permissible load 150 kg.

N According to norm EN 14183.

- i** Additional information on the servicing and assembly step, Hymer 71020:
- Platform dimensions 400 × 300 mm.

HYMER



71020



Code	Number of steps	Stile (mm)	Standing height (m)	Reach height (m)	Width top / bottom (mm)	Folded LxWxH (m)	Base width (m)	Weight (kg)
☼ 7102002	2	80	0,42	2,42	400 / 530	0,69 x 0,53 x 0,17	0,58	4,0
☼ 7102003	3	80	0,62	2,62	400 / 560	0,91 x 0,55 x 0,17	0,72	4,7
☼ 7102004	4	80	0,84	2,84	400 / 600	1,13 x 0,60 x 0,17	0,88	5,6

☼ Bestseller

6061

Safety step with handrail Hymer 6061

N According to norm EN 14183.

- i** Additional information on the step, Hymer 6061:
- Extremely stable, folding safety step.
 - Safe ascent and descent thanks to 47° angle of inclination.
 - Step width 360 mm and step depth 230 mm.
 - Steps with non-slip rubber coating.
 - High tensile and pressure-resistant bracing between ladder and support section.
 - with folding support bracket and functional tray.

HYMER



6061

Code	Number of steps	Standing height (m)	Reach height (m)	Width (mm)	Folded LxWxH (m)	Base width (m)	Weight (kg)
606103	3	0,70	2,70	560	1,12 x 0,55 x 0,12	0,90	8,4
☼ 606104	4	0,90	2,90	580	1,43 x 0,57 x 0,12	1,15	10,6
☼ 606105	5	1,15	3,15	600	1,75 x 0,59 x 0,12	1,50	12,8

☼ Bestseller

6864

Assembly stand Hymer 6864

- i** Additional information on the stand, Hymer 6864:
- Extremely sturdy design, even for heavy duty applications.
 - Assembly in a few simple steps.
 - Legs lock automatically in working and transport position.
 - Easy to transport by grip hole in platform surface.
 - Ladder feet screwed to the stile, easily replaceable.
 - Permissible load 300 kg (3.0 kN) distributed load.



HYMER

6864

Code	Stile (mm)	Standing height (m)	Reach height (m)	Folded LxWxH (m)	Working platform LxWxH (m)	Weight (kg)
686400	60	0,58	2,58	1,75 x 0,60 x 0,20	1,70 x 0,50	16,9

Bestseller

8080

Platform ladder with handrail Hymer 8080

- N** According to norm EN 131.
- i** Additional information on the ladder, Hymer 8080:
- Step depth 80 mm.
 - Platform dimensions: 440 x 400 mm.
 - Guardrail height above platform 800 mm.
 - On request, self-locking spring-loaded castors can be mounted on the ladder section/support section.
 - Large 450 mm wide tool tray for tools and small parts. And a sturdy hook for bucket or small appliances.
 - Two rigid safety bars against unintentional folding.
 - Sturdy reinforcement braces on first step.
 - With perlon straps from size 8 upwards.
 - The handrail is delivered unassembled but prepared for self-assembly.
 - The number of steps includes the platform.



8080

HYMER

Code	Number of steps	Stile (mm)	Length (m)	Standing height (m)	Reach height (m)	Vertical height (m)	Width (mm)	Base width (m)	Weight (kg)
808004	4	71	1,95	0,95	2,95	1,75	650	1,00	9,7
808005	5	71	2,20	1,15	3,15	2,00	670	1,15	10,7
808006	6	71	2,45	1,40	3,40	2,20	700	1,30	12,0
808007	7	71	2,70	1,65	3,65	2,55	730	1,60	13,3
808008	8	71	2,95	1,85	3,85	2,70	750	1,75	14,4
808009	9	71	3,20	2,10	4,10	3,00	780	1,90	16,0
808010	10	71	3,45	2,35	4,35	3,15	800	2,05	17,2
808012	12	71	3,95	2,80	4,80	3,60	850	2,35	22,2

Bestseller

8081

Platform ladder with tip and roll wheels and long handrail Hymer 8081



8081

- A** • Especially for applications which do not permit use of platform ladders with a wide chassis or require a close approach to shelves.
- +** • Easy to shift by lifting the ladder section.
- Large 450 mm wide tool tray for tools and small parts with sturdy hook for bucket or small appliances.
- Two rigid safety bars against unintentional folding.
- Sturdy reinforcement braces on first step.
- With perlon straps from size 8 upwards.
- Shipped in single parts which are prepared for self-assembly.

N According to norm EN 131.

i Additional information on the ladder, Hymer 8081:

- Step depth 80 mm.
- Platform dimensions: 440 x 400 mm.
- Guardrail height above platform 800 mm.
- Equipped with 100 mm diameter castors on support section.

HYMER

Code	Number of steps	Stile (mm)	Length (m)	Standing height (m)	Reach height (m)	Vertical height (m)	Width (mm)	Base width (m)	Weight (kg)
808104	4	71	1,95	0,95	2,95	1,75	650	1,15	9,9
808105	5	71	2,20	1,15	3,15	2,00	670	1,30	10,9
808106	6	71	2,45	1,40	3,40	2,20	700	1,45	12,2
808107	7	71	2,70	1,65	3,65	2,55	730	1,60	13,5
🔥 808108	8	71	2,95	1,85	3,85	2,70	750	1,75	14,6
808109	9	71	3,20	2,10	4,10	3,00	780	1,90	16,2
🔥 808110	10	71	3,45	2,35	4,35	3,15	800	2,05	17,4
🔥 808112	12	71	3,95	2,80	4,80	3,60	850	2,35	22,4

🔥 Bestseller

6888

Mobile stocker's ladder, single sided accessible, Hymer 6888

N According to norm EN 131-7.

- i** Additional information on the platform, Hymer 6888:
- Spacious platform with 600 × 800 mm step surface.
 - Step depth 200 mm.
 - Because of its parallel design, the stairs can be pushed right against the shelving.
 - Guardrail, knee and foot rail on three sides.
 - Guardrail height above platform 1,03 m.
 - 4 spring-loaded castors (Ø 125 mm), which automatically block when steps are ascended, 1 spring-loaded castor on the ladder section has locking brake to secure against rolling away, when platform is not loaded.
 - Vertical step distance 243 mm.
 - Permissible load 150 kg.
 - Shipped in single parts which are prepared for self-assembly.



6888

HYMER

Code	Number of steps	Stile (mm)	Standing height (m)	Reach height (m)	Vertical height (m)	Width (mm)	Base width (m)	Weight (kg)
688803	3	73	0,73	2,73	1,76	890	1,27	30,2
☼ 688804	4	73	0,97	2,97	2,00	890	1,45	34,1
688805	5	73	1,21	3,21	2,24	890	1,63	37,7
☼ 688806	6	73	1,46	3,46	2,49	1070	1,82	41,8
688807	7	73	1,70	3,70	2,73	1200	2,00	45,8
☼ 688808	8	73	1,94	3,94	2,97	1200	2,18	48,8

☼ Bestseller

6889

Mobile stocker's ladder, double-sided accessible, Hymer 6889

N According to norm EN 131-7.

- i** Additional information on the platform, Hymer 6889:
- With steps on both sides.
 - Spacious platform with 600 × 800 mm step surface.
 - Step depth 200 mm.
 - Because of its parallel design, the stairs can be pushed right against the shelving.
 - Guardrail height above platform 1,03 m.
 - 4 spring-loaded castors (Ø 125 mm), which automatically block when steps are ascended, of which 1 spring-loaded castor on the ladder section has locking brake to secure against rolling away, when platform not loaded.
 - Step distance 243 mm.
 - Permissible load 150 kg.
 - Shipped in subassemblies pre-assembled in the factory.



6889

HYMER

Type	Number of steps	Stile (mm)	Standing height (m)	Reach height (m)	Vertical height (m)	Width (mm)	Base width (m)	Weight (kg)
688903	2 x 3	73	0,73	2,73	1,76	890	1,51	32,9
☼ 688904	2 x 4	73	0,97	2,97	2,00	890	1,79	37,9
688905	2 x 5	73	1,21	3,21	2,24	890	2,07	42,9
☼ 688906	2 x 6	73	1,46	3,46	2,49	1070	2,35	49,5
688907	2 x 7	73	1,70	3,70	2,73	1200	2,63	54,9
☼ 688908	2 x 8	73	1,94	3,94	2,97	1200	2,91	59,7

☼ Bestseller

8483

Platform ladder HYMER ProTect Hymer 8483

N According to norms EN 131-7 and NF P 93-352/353.

- i** Additional information on the ladder, Hymer ProTect:
- The first extendable platform ladder.
 - Safe hands-free working due to handrails and knee bar on all sides.
 - Easy access due to self-closing safety door.
 - Highly stable due to variably adjustable stabilisers (from size 4).
 - With spacious, practical tool tray, for fitting at 2 heights.
 - Spacious platform 600×425 mm.
 - Comfortable ascent thanks to wide rungs 45 mm deep.
 - Convenient transport thanks to castors touching the floor when tilting the ladder.



8483

HYMER

Code	Number of rungs	Stile (mm)	Length (m)	Standing height (m)	Reach height (m)	Vertical height (m)	Width (mm)	Folded LxWx (m)	Base width (m)	Weight (kg)
848303	3	60	1,85	0,70	2,70	1,73	650	2,08 x 0,56 x 0,25	1,21	14,2
848304	4	60	2,10	0,93	2,93	1,96	1760	2,34 x 0,70 x 0,25	1,40	20,4
848305	5	60	2,35	1,16	3,16	2,19	1930	2,59 x 0,70 x 0,25	1,59	22,3
848306	6	60	2,60	1,39	3,39	2,43	2110	2,85 x 0,70 x 0,25	1,77	23,4
848307	7	60	2,85	1,62	3,62	2,66	2255	3,09 x 0,70 x 0,25	1,97	25,0
848308	8	60	3,10	1,85	3,85	2,89	2445	3,32 x 0,70 x 0,25	2,18	26,2

8484

Platform ladder HYMER ProTect+ Hymer 8484

N According to norms EN 131-7 and NF P 93-352/353.

- i** Additional information on the ladder, Hymer ProTect Plus:
- Safe hands-free working due to handrails and knee bar on all sides.
 - Easy access due to self-closing safety door.
 - Highly stable due to variably adjustable stabilisers.
 - With spacious, practical tool tray, for fitting at 2 heights.
 - Spacious platform 600×425 mm.
 - Comfortable ascent thanks to wide rungs 45 mm deep.
 - With telescoping ladder sections for height adjustment at the distance of a rung.
 - Convenient transport thanks to castors touching the floor when tilting the ladder.
 - Set up in stairway mode possible.



8484

HYMER

Code	Number of rungs	Stile (mm)	Length (m)	Standing height (m)	Reach height (m)	Vertical height (m)	Width (mm)	Folded LxWx (m)	Base width (m)	Weight (kg)
848405	3 - 5	60	2,06 - 2,31	0,86 - 1,09	2,86 - 3,09	1,90 - 2,13	1775 - 1975	2,30 x 0,70 x 0,32	1,50 - 1,64	25,4
🔥 848408	5 - 8	60	2,36 - 3,06	1,15 - 1,77	3,15 - 3,77	2,20 - 2,81	1925 - 2410	2,59 x 0,70 x 0,32	1,69 - 2,28	30,4
🔥 848410	6 - 10	60	2,61 - 3,56	1,39 - 2,24	3,39 - 4,24	2,43 - 3,29	2110 - 2780	2,85 x 0,70 x 0,32	1,87 - 2,65	33,0

🔥 Bestseller

4026

Step ladder with platform, single-sided accessible, Hymer 4026

N According to norm EN 131.

i Additional information on the ladder, Hymer 4026:

- Anodised stiles avoid dirty hands from aluminium abrasion.
- Step depth 80 mm. Front step edges flush with stile.
- platform dimensions: 250 x 250 mm
- Spreader lock provided by high-strength, 20 mm wide Perlon straps from size 7 upwards.
- Sturdy reinforcement braces on first step.
- With spacious, practical tool tray made of high-strength plastic.
- Sturdy bucket hook with 25 kg load-bearing capacity.
- Extra large ladder shoes press-fitted in.



4026

HYMER

Code	Number of steps	Stile (mm)	Length (m)	Standing height (m)	Reach height (m)	Vertical height (m)	Width top / bottom (mm)	Base width (m)	Weight (kg)
402603	3	55	1,37	0,65	2,65	1,25	280 / 415	0,70	4,0
☼ 402604	4	55	1,62	0,88	2,88	1,48	280 / 440	0,85	4,9
402605	5	55	1,87	1,11	3,11	1,71	280 / 465	1,00	5,6
☼ 402606	6	55	2,12	1,35	3,35	1,95	280 / 495	1,15	6,4
402607	7	55	2,36	1,58	3,58	2,18	280 / 520	1,30	7,4
402608	8	55	2,61	1,80	3,80	2,40	280 / 545	1,50	7,9

☼ Bestseller

6026

Step ladder with platform, single-sided accessible, Hymer 6026

N According to norm EN 131.

i Additional information on the ladder, Hymer 6026:

- Stable concept of D-shaped stiles for a considerably higher feeling of safety when working on the step ladder and 4-times higher torsional stability of the stiles.
- Octuple riveted steps with 80 mm step depth. Front and rear edges flush with stile.
- Platform dimensions: 250 x 250 mm.
- Spreader lock provided by high-strength, 20 mm wide Perlon straps from size 6 upwards.
- Deep aluminium tray with hooking option for bucket.
- Extra large ladder shoes riveted on the stile.



6026

HYMER

Code	Number of steps	Stile (mm)	Length (m)	Standing height (m)	Reach height (m)	Vertical height (m)	Width top / bottom (mm)	Base width (m)	Weight (kg)
602603	3	81	1,45	0,68	2,68	1,33	305 / 450	0,70	5,6
602604	4	81	1,70	0,91	2,91	1,56	305 / 475	0,85	5,8
602605	5	81	1,95	1,14	3,14	1,79	305 / 500	1,00	6,6
602606	6	81	2,22	1,37	3,37	2,02	305 / 525	1,15	8,2
☼ 602607	7	81	2,45	1,60	3,60	2,25	305 / 550	1,30	9,4
☼ 602608	8	81	2,70	1,84	3,84	2,49	305 / 575	1,50	10,5
☼ 602610	10	81	3,20	2,30	4,30	2,95	305 / 625	1,80	12,2

☼ Bestseller

8626

Step ladder R13 with platform, single-sided accessible

- A** Suitable for use in oily areas.
- +**
- Work safety in the highest slip resistance class R13.
 - Ergonomic working on 80 mm step depth. Front step edges flush with stile.
 - Comfortable and safe standing for longer periods of work thanks to the large platform.
 - Solid aluminium tool tray with bucket hook.
 - High-strength perlon straps provide reliable safety strut (for step ladders as from 7 steps).

N According to norm EN 131.

- i** Additional information on the ladder, Hymer 8626:
- R13 coating on the entire step surface.
 - Screwed-in ladder feet.
 - Platform dimensions 250 x 250 mm.
 - The number of steps includes the platform.



8626



HYMER

Code	Number of steps	Stile (mm)	Length (m)	Standing height (m)	Reach height (m)	Vertical height (m)	Width top / bottom (mm)	Base width (m)	Weight (kg)
862604	4	71	1,70	0,93	2,93	1,55	305 / 480	0,90	6,3
862605	5	71	1,95	1,16	3,16	1,78	305 / 500	1,05	7,3
862606	6	71	2,20	1,40	3,40	2,01	305 / 530	1,20	8,3
862607	7	71	2,45	1,63	3,63	2,25	305 / 550	1,35	9,5
☉ 862608	8	71	2,70	1,85	3,85	2,48	305 / 570	1,50	10,6
☉ 862610	10	71	3,20	2,32	4,32	2,94	305 / 630	1,85	13,1
☉ 862612	12	71	3,70	2,78	4,78	3,40	305 / 680	2,20	15,3
862614	14	71	4,20	3,25	5,25	3,87	305 / 740	2,55	18,3

☉ Bestseller

4024

Step ladder, double-sided accessible, Hymer 4024

N According to norm EN 131.

- i** Additional information on the ladder, Hymer 4024:
- Anodised stiles avoid dirty hands from aluminium abrasion.
 - Step depth 80 mm. Front step edges flush with stile.
 - Sturdy steel hinges.
 - Spreader lock provided by high-strength, 20 mm wide Perlon straps.
 - Sturdy reinforcement braces on first step.
 - Extra large ladder shoes press-fitted in.



4024

HYMER

Code	Number of steps	Stile (mm)	Length (m)	Standing height (m)	Reach height (m)	Vertical height (m)	Width top / bottom (mm)	Base width (m)	Weight (kg)
402406	2 x 3	55	0,78	0,19	2,19	0,70	340 / 410	0,75	3,6
☉ 402408	2 x 4	55	1,03	0,42	2,42	0,90	340 / 435	0,90	4,5
402410	2 x 5	55	1,28	0,65	2,65	1,15	340 / 460	1,10	5,5
☉ 402412	2 x 6	55	1,53	0,88	2,88	1,38	340 / 485	1,30	6,7
402414	2 x 7	55	1,79	1,12	3,12	1,61	340 / 510	1,50	8,0
402416	2 x 8	55	2,02	1,34	3,34	1,84	340 / 540	1,65	8,8

☉ Bestseller

6024

Step ladder, double-sided accessible, Hymer 6024

N According to norm EN 131.

i Additional information on the ladder, Hymer 6024:

- Stable concept of D-shaped stiles for a considerably higher feeling of safety when working on the step ladder and 4-times higher torsional stability of the stiles.
- Octuple riveted steps with 80 mm step depth. Front and rear edges flush with stile.
- Maintenance-free hinge components.
- Spreader lock provided by high-strength, 20 mm wide Perlon straps.
- Extra large ladder shoes riveted on the stile.



6024

HYMER

Code	Number of steps	Stile (mm)	Length (m)	Standing height (m)	Reach height (m)	Vertical height (m)	Width top / bottom (mm)	Base width (m)	Weight (kg)
602406	2 x 3	81	0,78	0,21	2,21	0,65	375 / 450	0,75	4,6
602408	2 x 4	81	1,02	0,44	2,44	0,90	375 / 475	0,95	5,7
602410	2 x 5	81	1,26	0,67	2,67	1,15	375 / 500	1,15	6,9
602412	2 x 6	81	1,50	0,91	2,91	1,35	375 / 525	1,35	8,1
🔥 602414	2 x 7	81	1,77	1,14	3,14	1,60	375 / 550	1,55	9,5
🔥 602416	2 x 8	81	2,00	1,37	3,37	1,80	375 / 575	1,75	10,8
🔥 602420	2 x 10	81	2,50	1,83	3,83	2,30	375 / 625	2,10	13,7

🔥 Bestseller

8624

Step ladder R13 with platform, doubled-sided accessible

- A** Suitable for use in oily areas.
- +**
 - Work safety in the highest slip resistance class R13.
 - Ergonomic working on 80 mm step depth. Front step edges flush with stile.
 - Comfortable and safe standing for longer periods of work thanks to the large platform.
 - Torsion-resistant joint made of die-cast aluminium.
 - High-strength perlon straps provide reliable safety strut.

N According to norm EN 131.

- i** Additional information on the ladder, Hymer 8624:
 - R13 coating on the entire step surface.
 - Screw-in ladder feet.



8624



HYMER

Code	Number of steps	Stile (mm)	Length (m)	Standing height (m)	Reach height (m)	Vertical height (m)	Width top / bottom (mm)	Base width (m)	Weight (kg)
862406	2 x 3	71	0,77	0,22	2,22	0,70	355 / 430	0,80	4,8
862408	2 x 4	71	1,04	0,45	2,45	0,95	355 / 450	0,98	6,2
862410	2 x 5	71	1,30	0,69	2,69	1,15	355 / 475	1,15	7,6
862412	2 x 6	71	1,53	0,92	2,92	1,40	355 / 500	1,30	9,1
862414	2 x 7	71	1,80	1,15	3,15	1,65	355 / 525	1,50	10,5
🔥 862416	2 x 8	71	2,05	1,38	3,38	1,85	355 / 550	1,70	12,1
862418	2 x 9	71	2,28	1,61	3,61	2,10	355 / 575	1,95	13,6
🔥 862420	2x 10	71	2,54	1,85	3,85	2,30	355 / 600	2,15	15,3
🔥 862424	2 x 12	71	3,04	2,31	4,31	2,80	355 / 650	2,50	18,7

🔥 Bestseller

4011

Rung leaning ladder Hymer 4011

N According to norm EN 131.

i Additional information on the ladder, Hymer 4011:

- Inner width of the ladder: 300 mm.
- Rolled profile rungs.
- Ladder feet press-fitted in stile up to size 10.
- Cross-beam from size 12 upwards.

HYMER



4011

Code	Number of rungs	Stile (mm)	Length (m)	Standing height (m)	Reach height (m)	Width top / bottom (mm)	Weight (kg)
☼ 401106	6	60	1,78	0,75	2,75	355 / 355	2,9
☼ 401108	8	60	2,34	1,29	3,29	355 / 355	3,7
☼ 401110	10	60	2,90	1,83	3,83	355 / 355	4,6
☼ 401112	12	60	3,47	2,37	4,37	355 / 697	6,4
401114	14	60	4,03	2,91	4,91	355 / 810	7,3
401116	16	66	4,59	3,45	5,45	355 / 810	8,6
401118	18	66	5,15	3,99	5,99	355 / 921	9,6

☼ Bestseller

4051

Rope-operated extension ladder, 2 sections, Hymer 4051

N According to norm EN 131.

i Additional information on the ladder, Hymer 4051:

- Inner width of the ladder: 300 mm (top section).
- Rolled profile rungs.
- Solid guide fittings made of steel.
- Maximum grip rope (diam.10 mm), for safe height adjustment.
- With wall rollers to easily extend the ladder.
- All sizes with cross-beam.

HYMER



4051

Code	Number of rungs	Stile (mm)	Max # of rungs	Length retracted (mm)	Length extended (mm)	Standing height (m)	Reach height (m)	Width top / bottom (mm)	Weight (kg)
☼ 405128	2 x 14	83	25	4,11	7,18	5,97	7,97	355 / 1200	18,8
☼ 405132	2 x 16	89	29	4,67	8,30	7,05	9,05	355 / 1200	23,5
405136	2 x 18	89	32	5,23	9,14	7,86	9,86	355 / 1200	26,5
405140	2 x 20	89	36	5,79	10,26	8,95	10,95	355 / 1200	30,4

☼ Bestseller

4142

Telescopic ladder Hymer 4142

N According to norm EN 131-4.

i Additional information on the ladder, Hymer 4142:

- Versatile use as single or double ladder.
- Height adjustable in 280 mm steps.
- Easy to operate steel hinge. In the detached position is to be unlocked, the hinge for folding by hand.
- Setup on stages.
- Steel handles of blocking element with plastic cover.
- Solid locking elements with steel core for height.
- Size 4x6 is equipped with a button hinge.
- Working height = standing height + 1,50 m; reach height = standing height + 2,00 m.



4142

HYMER

Code	Number of rungs	Stile (mm)	Max # of rungs	Length (m)	Standing height (m)	Width top/bottom (mm)	Folded LxWxH (m)	Base width (m)	Vertical height of step ladder (m)	Weight (kg)
414216	4 x 4	60	14	2,35 - 4,02	1,26 / 3,00	355 / 830	1,20 x 0,60 x 0,20	0,87 / 1,36	1,15 - 1,95	13,2
414220	4 x 5	60	18	2,90 - 5,14	1,80 / 4,10	355 / 945	1,50 x 0,70 x 0,20	1,03 / 1,72	1,40 - 2,49	16,2
🔥 414224	4 x 6	60	22	3,46 - 6,26	2,35 / 5,20	355 / 1055	1,80 x 0,75 x 0,20	1,20 / 2,01	1,70 - 3,03	19,0

🔥 Bestseller

4143 / 4043

Multipurpose Ladder Hymer 4143 / 4043

N According to norm EN 131.

i Additional information on the ladder, Hymer 4143 / 4043:

- Versatile for use as leaning ladder, stepladder, working platform and stairway working platform (only 4 x 3).
- Rolled profile rungs.
- Steel hinge with locking clamp, easy to use, locks automatically in every position.
- Sturdy cross-beam for high stability.
- Space-saving for storage and transport.
- Working platform LxWxH for size 4 x 3: 1,40 x 0,29 x 0,90 m.
- Working height = standing height + 1,50 m; reach height = standing height + 2,00 m.



4143 / 4043

HYMER

Code	Number of rungs	Stile (mm)	Length (m)	Standing height (m)	Width top/bottom (mm)	Folded LxWxH (m)	Base width (m)	Vertical height of step ladder (m)	Weight (kg)
🔥 414312	4 x 3	60	3,47	1,01 / 2,50	355 / 697	0,90 x 0,70 x 0,30	1,15	1,70	12,6
🔥 404316	4 x 4	60	4,59	1,55 / 3,60	355 / 810	1,20 x 0,81 x 0,30	1,48	2,25	14,6

🔥 Bestseller

6012

Leaning step ladder Hymer 6012

N According to norm EN 131.

i Additional information on the ladder, Hymer 6012:

- Stable concept of D-shaped stiles for increased feeling of safety when working on the stepladder and stiles with 4 times greater torsional stability.
- Octuple riveted steps with 80 mm step depth. Front and rear edges flush with stile.
- Perforations to fit hooks or support board.
- Additional perforation for second pair of suspension hooks for vertical storage present.
- Extra-large ladder feet, also riveted to the side beams.
- Pre-assembly of support board or hooks possible.



6012

HYMER

Code	Number of steps	Stile (mm)	Length (m)	Standing height (m)	Reach height (m)	Width top / bottom (mm)	Weight (kg)
601205	5	81	1,50	0,45	2,45	425 / 425	3,4
601206	6	81	1,75	0,68	2,68	425 / 425	4,0
601207	7	81	2,00	0,91	2,91	425 / 425	4,7
☼ 601208	8	81	2,25	1,14	3,14	425 / 425	5,2
601209	9	81	2,50	1,37	3,37	425 / 425	5,9
☼ 601210	10	81	2,75	1,61	3,61	425 / 425	6,3
601211	11	81	3,00	1,84	3,84	425 / 425	6,9

☼ Bestseller

0050378

Universal, foldable ladder step, Hymer 0050378

- i** Additional information on the step, Hymer 0050378:
- For rung dimensions of 30 x 30 mm.
 - For ladders with an inner width of at least 290 mm.
 - For rung distance 280 mm.
 - Safe standing on the ladder thanks to step surface located over the middle of the rung.
 - The fold-up step ensures safe ascent of the ladder.
 - Step width 260 mm, step depth 250 mm.
 - Permissible load 150 kg (1.5 kN).



0050378

HYMER

Code	Weight (kg)
0050378	1,1

0051248

Telescopic wall spacer for rung ladders Hymer 0051248

- i** Additional information on the spacer, Hymer 0051248:
- For rung dimensions of 30 x 30 mm.
 - For ladders with an inner width of at least 290 mm.
 - For rung distance 280 mm.
 - Adjustable wall distance from 420 mm to 670 mm.
 - Upper holder width at least 680 mm, max. 940 mm.
 - With anti-lift device.
 - With tray for tools with depth of 240 mm.
 - Permissible load of tool tray 15 kg.
 - Can be fitted without tools by means of a hook.



0051248

HYMER

Code	Weight (kg)
0051248	2,2

008953

Fixed castor set for telescopic ladders Hymer 008953

- i** Additional information on the castors, Hymer 008953:
- Rubber-covered castors for comfortable moving of telescopic ladders.
 - Self assembly by using tools.
 - Contents: 2 wall rollers incl. fastening material.



008953

HYMER

Code	Weight (kg)
008953	0,4

0054008

Bucket hook for rung ladders Hymer 0054008

- i** Additional information on the hook:
- Permissible load 25 kg (0,25 kN).

HYMER



0054008

Code
0054008

0055008

Ladder bracket set for roof racks Hymer 0055008

- i** Additional information on the brackets, Hymer 0055008:
- Quick and safe fastening and securing of ladders on carriers and heavy-load cages.
 - Equipped with locks, so that the ladders are protected against theft.
 - Content: 2 ladder brackets and one set of keys.

HYMER



0055008

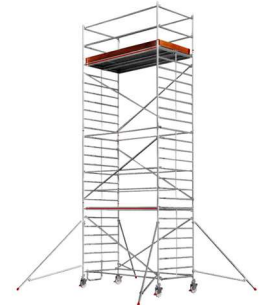
Code	Weight (kg)
0055008	2,6

6773

Mobile tower Hymer 6773

N According to norm EN 1004.

- i** Additional information on the tower, Hymer 6773:
- 2,7 m² working area offers maximum safety and lots of space for large volumes of work materials.
 - Especially suitable for work on large ceiling areas.
 - Set-up in stairways possible.
 - Permissible load: 400 kg (4,0 kN) distributed load, corresponds to 150 kg/m² (1,5 kN/m²), according to tower group 2, DIN EN 1004.



6773

HYMER

Code	Standing height (m)	Tower height (m)	Reach height (m)	Platform length (m)	Frame section width (m)	Weight (kg)
677303	1,40	2,40	3,40	2,45	1,50	93,5
☼ 677304	2,40	3,40	4,40	2,45	1,50	143,9
☼ 677305	3,40	4,40	5,40	2,45	1,50	169,3
☼ 677306	4,40	5,40	6,40	2,45	1,50	183,3
677307	5,40	6,40	7,40	2,45	1,50	239,9
677308	6,40	7,40	8,40	2,45	1,50	253,9
677309	7,40	8,40	9,40	2,45	1,50	279,3
677310	8,40	9,40	10,40	2,45	1,50	293,3
677311	9,40	10,40	11,40	2,45	1,50	349,9
677312	10,40	11,40	12,40	2,45	1,50	363,9
677313	11,40	12,40	13,40	2,45	1,50	389,3

☼ Bestseller

7075

Mobile tower Hymer 7075

- + • Extremely robust design due to welded frame sections.
- Quick assembly and dismantling due to quick release catches on braces and diagonals.
- Non-slip surface on platforms and manual safety hooks for safe assembly and dismantling.
- Easy levelling out of uneven floors thanks to height adjustable swivel castors.
- Maximum protection during assembly thanks to SAFE-T safety guardrail.
- Permissible load 200 kg/m².



7075

N According to norm EN 1004.

i Additional information on the tower, Hymer 7075:

- Platform length 2.08 m.
- Frame section width 0.72 m.
- Working surface 2.08 x 0.61 m.
- Swivel castors Ø 150 mm.



HYMER

Code	Standing height (m)	Tower height (m)	Reach height (m)	Platform length (m)	Frame section width (m)	Weight (kg)
707503	1,27	2,49	3,27	2,08	0,72	64,20
707504	2,27	3,49	4,27	2,08	0,72	96,8
707505	3,27	4,49	5,27	2,08	0,72	120,3
🔥 707506	4,27	5,49	6,27	2,08	0,72	132,9
🔥 707507	5,27	6,49	7,27	2,08	0,72	156,4
🔥 707508	6,27	7,49	8,27	2,08	0,72	169,0
707509	7,27	8,49	9,27	2,08	0,72	198,5

🔥 Bestseller

8177

Folding mobile tower Hymer with stabilisers 8177

- + • Extremely robust design due to welded frame sections.
- Quick assembly and dismantling due to quick-release catches on braces and diagonals.
- Minimum space requirement for transport and storage thanks to the folding function.
- Non-slip surface on platforms and manual safety hooks for safe assembly and dismantling.
- Easy levelling out of uneven floors thanks to height adjustable swivel castors (from size 7).
- Optional set-up with height offset.

N According to norm EN 1004.

i Additional information on the tower, Hymer 8177:

- Platform length 1.90 m.
- Frame section width 0.80 m.
- Working surface 1.90 x 0.65 m.
- Swivel castors Ø 125 mm, 150 from size 7
- Permissible load 200 kg/m².



8177

HYMER

Code	Standing height (m)	Tower height (m)	Reach height (m)	Platform length (m)	Frame section width (m)	Weight (kg)
811703	0,80	1,80	2,80	1,90	0,80	41,1
811704	1,57	2,80	3,57	1,90	0,80	68,2
⊕ 811705	2,57	3,80	4,57	1,90	0,80	116,1
⊕ 811706	3,57	4,80	5,57	1,90	0,80	143,5
⊕ 811707	4,75	5,99	6,75	1,90	0,80	170,8
811708	5,75	6,99	7,75	1,90	0,80	198,2
811709	6,75	7,99	8,75	1,90	0,80	215,2

⊕ Bestseller

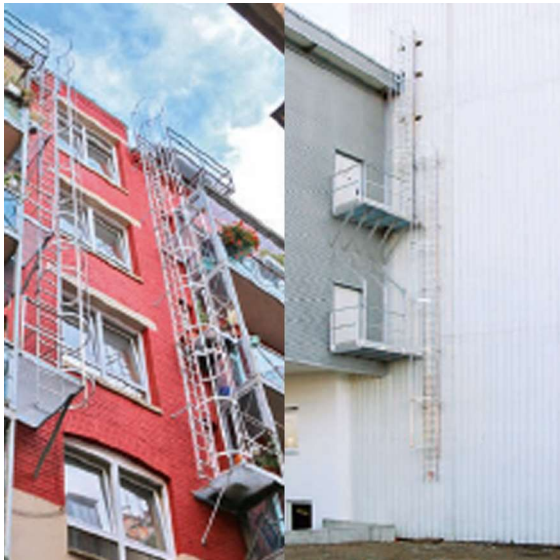
Vertical ladders

Benefits of vertical ladders from Hymer:

- The assembly of the vertical ladder system is extremely easy. It can also be carried out 30% faster than comparable systems.
- The online configurator helps ensure the reliability in your planning.
- Quick delivery time.
- The vertical ladder systems comply with all relevant standards and provide inspected and certified quality assurance.
- For special structural requirements, a comprehensive product range of accessories or custom adjustments is provided.



**Ladder for building maintenance,
Hymer 3185 DIN 18799-1**

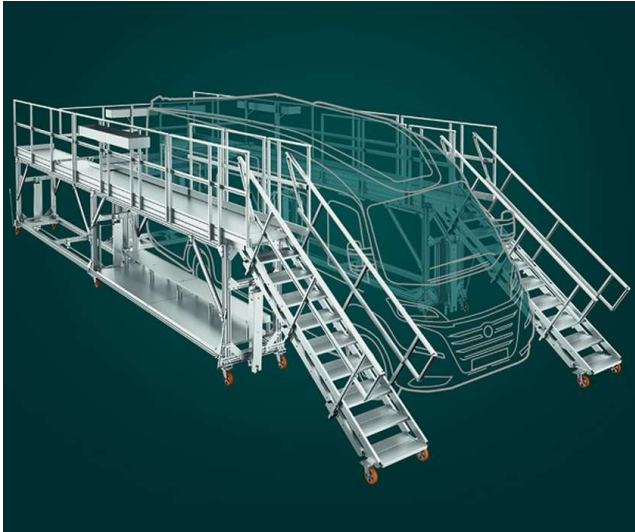


**Escape ladder or fire escape ladder as a second
escape route, Hymer 3185 DIN 14094-1**

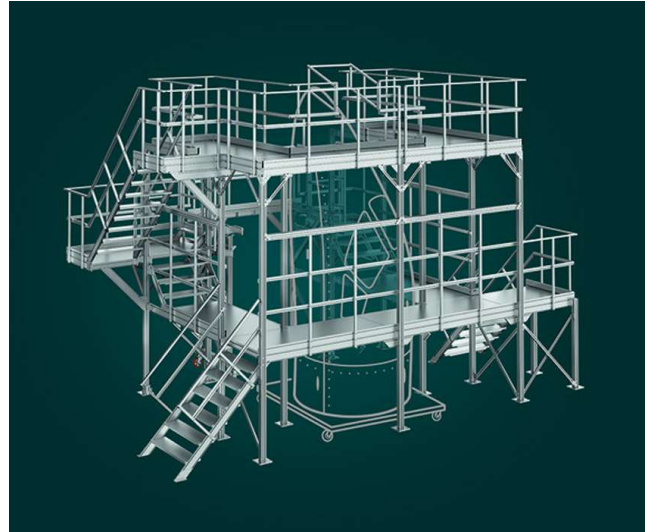


**Ladder for plant machinery maintenance,
Hymer 3385 EN ISO 14122-4**

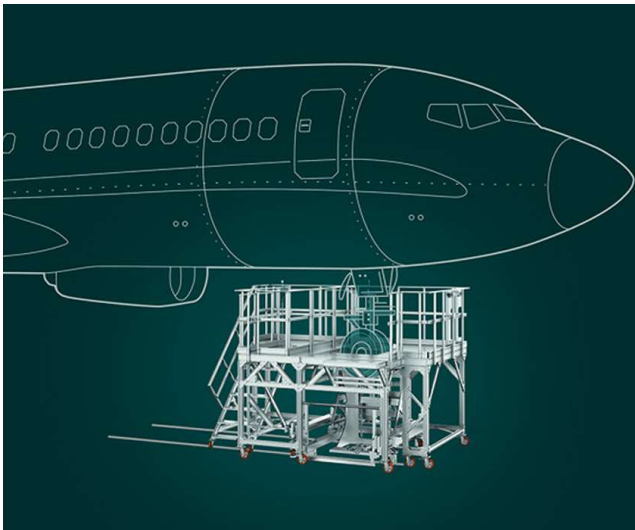
Special types



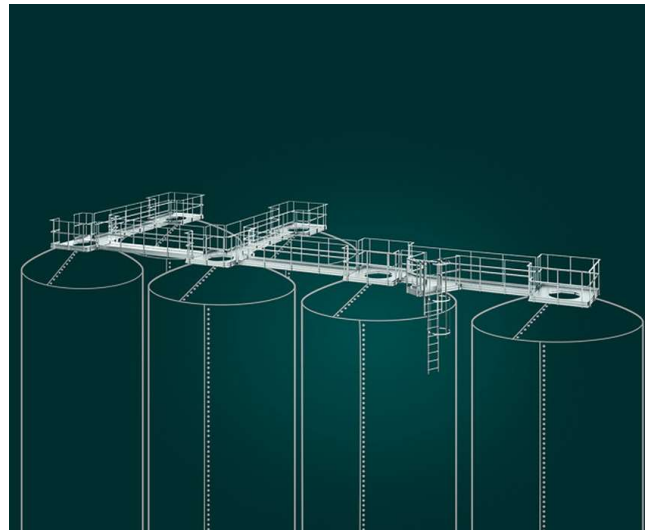
Work platform for assembly services



Work platform for sub-assembly and front-assembly



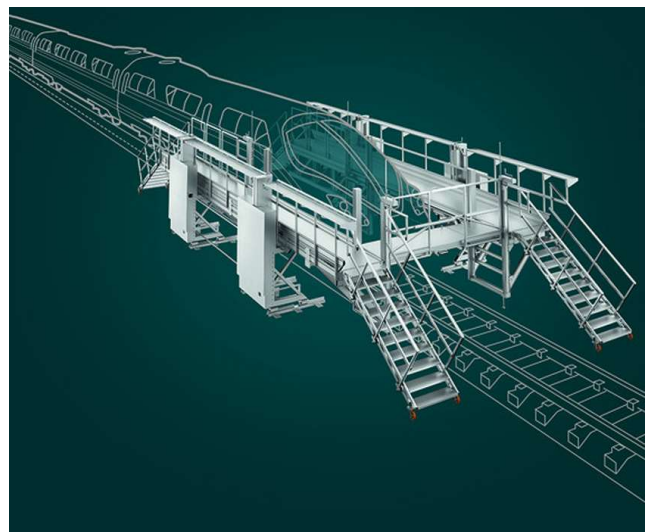
Work platform for aerial construction



Fixed vertical ladders and walkways



Mobile platform, adjustable in height



Adjustable assembly platform

ECCA

Wire rope ladder ECCA

- i** Additional information on the wire rope ladder, ECCA:
- Rungs width: 400 mm.
 - Distance between the rungs: 330 mm (3 rungs per meter).
 - Wire rope composition: 6x19 + steel core.
 - Rungs diam. 30 mm - thickness 1,50 mm.
 - The rungs are attached by pressed sleeves.
 - The ends of the rungs are closed by plastic caps.
 - The 2 wire rope ends are equipped with pressed sleeves and 2 carabiners 8x80 mm with security ring.

Galvanised version:

- Wire rope and carabiners: galvanised. Rungs and sleeves: aluminium.
- Tensile strength of the wire rope 1960 N/mm².
- Minimum breaking load 2510kg in 6 mm and 4460 kg in 8 mm.

Stainless steel version:

- Wire rope, carabiners, rungs and sleeves: AISI316.
- Tensile strength of the wire rope 1570 N/mm².
- Minimum breaking load 2010 kg in 6 mm and 3570 kg in 8 mm.

Upon request:

- Other lengths.
- Lighter execution with a thinner wire rope and shorter rungs, for example wire rope of 3 mm with rungs width 200 mm.
- Not rounded at the bottom but with 2 carabiners to secure the ladder.



ECCA

Version wire rope / rungs	Ø wire rope (mm)	Length (m)	Width (mm)	Weight (kg)
☛ galvanised / aluminium	6	10	400	5
stainless steel / stainless steel	6	10	400	5
galvanised / aluminium	10	10	400	7
stainless steel / stainless steel	10	10	400	7

☛ Bestseller

ECCO

Rope ladder with wooden rungs ECCO

- i** Additional information on the rope ladder, ECCO:
- Rope diameter: 18 mm.
 - Rope quality: synthetic hemp.
 - Breaking load: 2440 kg.
 - Round rungs.
 - Wooden rungs diameter: 35 mm.
 - Sports length: 450 mm.
 - Rungs width: 350 mm.
 - Sports distance: 330 mm.
 - The rungs are squeezed between the strands of the rope, after which they are fastened more by screws.
 - Galvanized thimbles are attached to the 2 rope ends.

Upon request:

- Large carabiners instead of thimbles.
- Not rounded at the bottom but with 2 thimbles or carabiners to secure the ladder.
- Other lengths.



ECCO

	Length (m)	Width (mm)
	5	400
	6	400
⊕	10	400
	15	400
	20	400

⊕ Bestseller